

WAAS CH <b>90320</b> <b>W19A</b>	APP CRS <b>192°</b>	Rwy Idg TDZE Apt Elev	<b>6526</b> <b>754</b> <b>757</b>
--	------------------------	-----------------------------	---

RNAV (GPS) Z RWY 19

KANSAS CITY DOWNTOWN/WHEELER FLD (MKC)

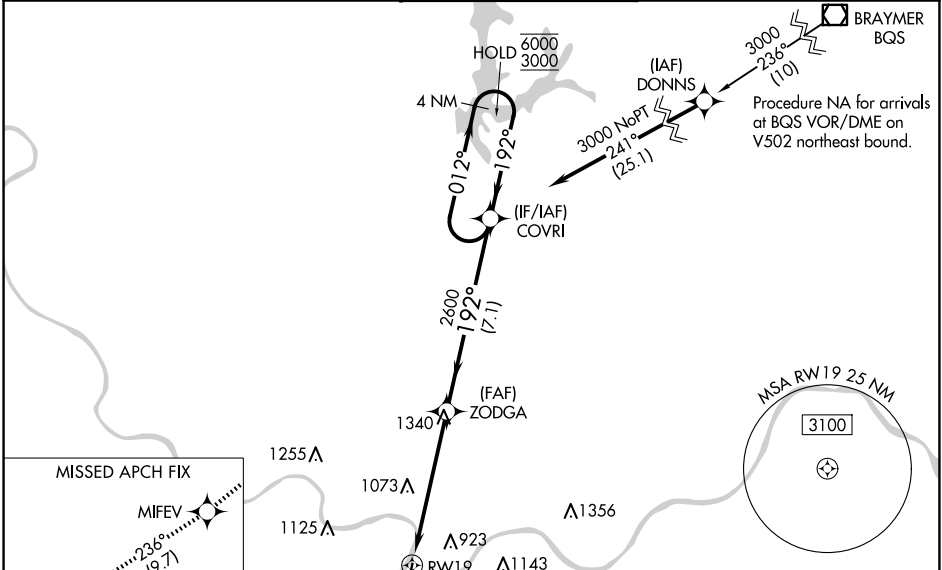
RNP APCH-GPS.

▼ Rwy 19 helicopter visibility reduction below RVR 4000 NA.  
Inop table does not apply to LPV\* all Cats. For uncompensated Baro-VNAV systems, LNAV/VNAV NA below -19°C or above 54°C. For inop ALS, increase LPV visibility all Cats to RVR 5500.

MAJSA

MISSED APPROACH: Climb to 1300 then climbing right turn to 4000 direct MIFEV and on track 236° to YETUK and hold.  
\*Missed approach requires minimum climb of 300 feet per NM to 1500.  
#Missed approach requires minimum climb of 360 feet per NM to 2400.

ATIS <b>120.75</b>	KANSAS CITY APP CON <b>118.4 307.35</b>	DOWNTOWN TOWER <b>133.3 233.7</b>	CLNC DEL <b>121.9</b>	GND CON <b>121.9</b>
-----------------------	--	--------------------------------------	--------------------------	-------------------------



1300

4000

MIFEV

tr 236°

YETUK

COVRI

4 NM Holding Pattern

012° → 6000

← 192° 3000

GP 3.00°

TCH 46

RW19

2600

192°

2600

5.7 NM

7.1 NM

CATEGORY	A	B	C	D
LPV DA*		1004/40	250 (300-¾)	
LPV DA		1097/40	343 (400-¾)	
LNAV/VNAV DA#		1077/40	323 (400-¾)	
LNAV/VNAV DA		1468-1¾	714 (800-1¾)	

ELEV 757

D

TDZE 754

192°

61

4

22

5533 X 100

6827 X 150

TWR 854

1

RLS Rwy 1

REIL Rwys 1 and 22

HIRL Rwys 4-22 and 1-19