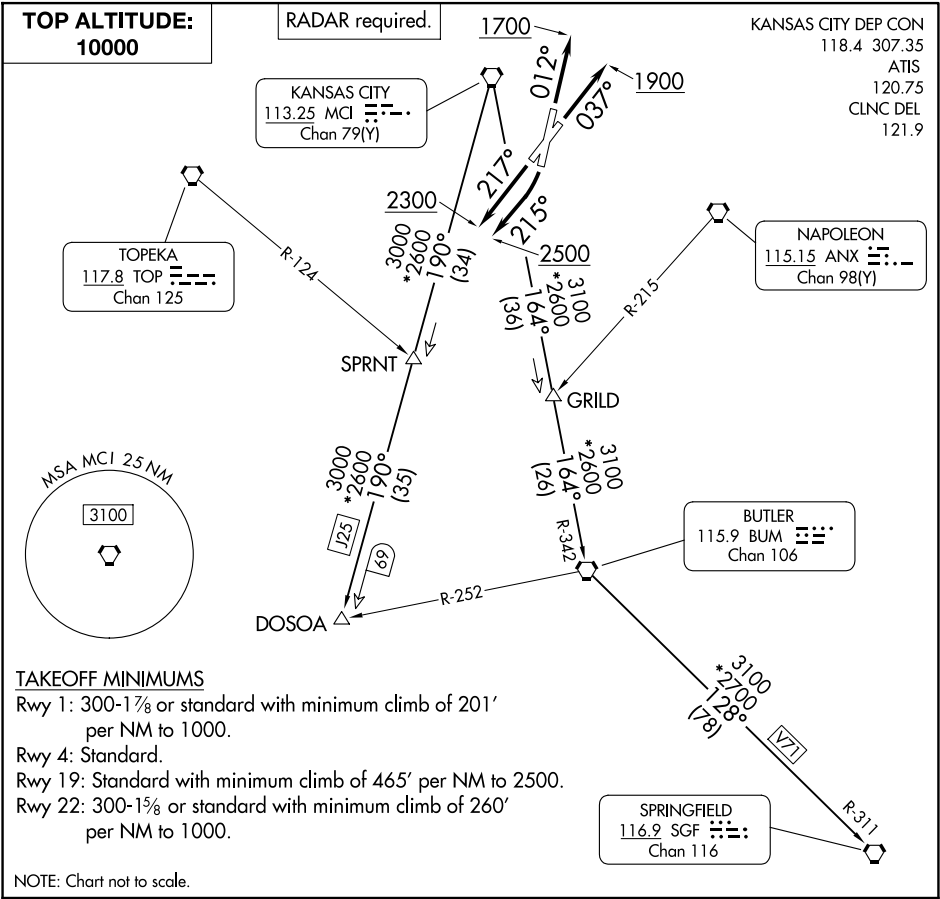


RACER EIGHT DEPARTURE

KANSAS CITY DOWNTOWN/WHEELER FLD (MKC)

AL-213 (FAA)

KANSAS CITY, MISSOURI



DEPARTURE ROUTE DESCRIPTION

**TAKEOFF RUNWAY 1:** Climb on heading 012° to 1700, thence. . .

**TAKEOFF RUNWAY 4:** Climb on heading 037° to 1900, thence. . .

**TAKEOFF RUNWAY 19:** Climbing right turn heading 215° to 2500, thence. . .

**TAKEOFF RUNWAY 22:** Climb on heading 217° to 2300, thence. . .

. . . climb on assigned heading for RADAR vectors to appropriate route. Maintain 10000 or as assigned by ATC, expect filed altitude 10 minutes after departure.

**BUTLER TRANSITION (RACER8.BUM):** From over MCI VORTAC on MCI R-164 and BUM R-342 to BUM VORTAC.

**DOSOA TRANSITION (RACER8.DOSOA):** From over MCI VORTAC on MCI R-190 to DOSOA.

**SPRINGFIELD TRANSITION (RACER8.SGF):** From over MCI VORTAC on MCI R-164 and BUM R-342 to BUM VORTAC, then on BUM R-128 and SGF R-311 to SGF VORTAC.

RACER EIGHT DEPARTURE