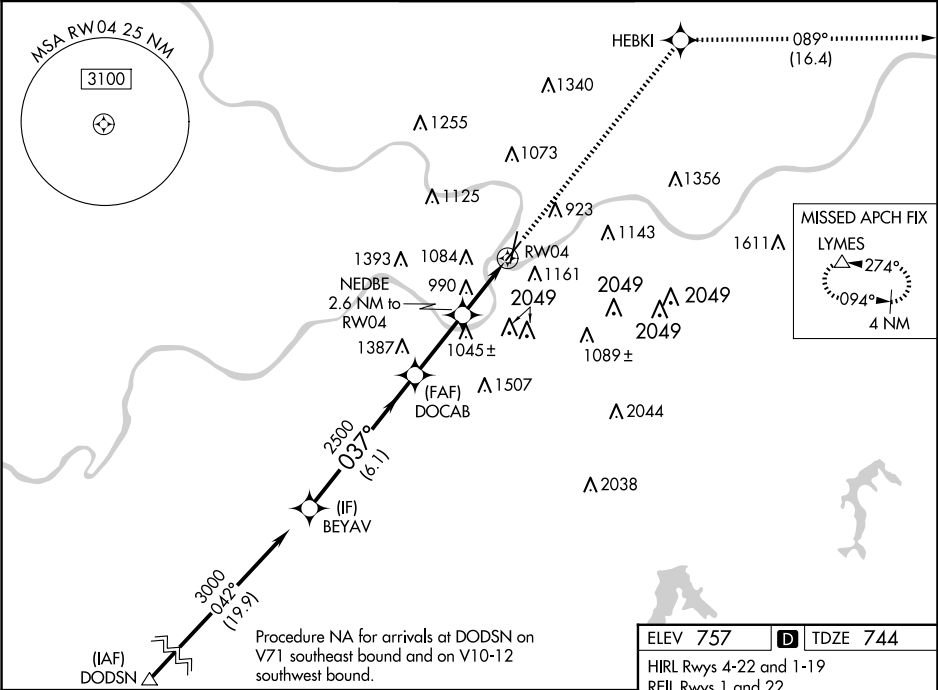


WAAS CH <b>50112</b> <b>W04A</b>	APP CRS <b>037°</b>	Rwy Idg TDZE <b>744</b> Apt Elev <b>757</b>
--	------------------------	---

RNAV (GPS) RWY 4

KANSAS CITY DOWNTOWN/WHEELER FLD (MKC)

RNP APCH - GPS.			MISSED APPROACH: Climb to 3000 direct HEBKI and on track 089° to LYMES and hold.	
⚠ Circling NA east of Rwy 1-19. Rwy 4 helicopter visibility reduction below RVR 4000 NA. For uncompensated Baro-VNAV systems, LNAV/VNAV NA below -19°C or above 54°C. Circling NA for Cat D to Rwy 4. Circling NA to Rwy 22.				
ATIS 120.75	KANSAS CITY APP CON 118.4 307.35	DOWNTOWN TOWER 133.3 233.7	CLNC DEL 121.9	GND CON 121.9



BEYAV		DOCAB		3000	HEBKI	LYMES
GP 3.00°		2500		2500	tr 089°	△
TCH 50		1620		RWY 04		
6.1 NM		2.8 NM		1.2 NM	1.4 NM	
CATEGORY	A	B	C	D		
LPV DA	999/40		255 (300-¾)	NA		
LNAV/VNAV DA	1411-178		667 (700-178)	NA		
LNAV MDA	1240/55	496 (500-1)	1240-138	NA		
CIRCLING	1380-1	1400-1	1460-2	1540-2½		
	623 (700-1)	643 (700-1)	703 (800-2)	783 (800-2½)		

