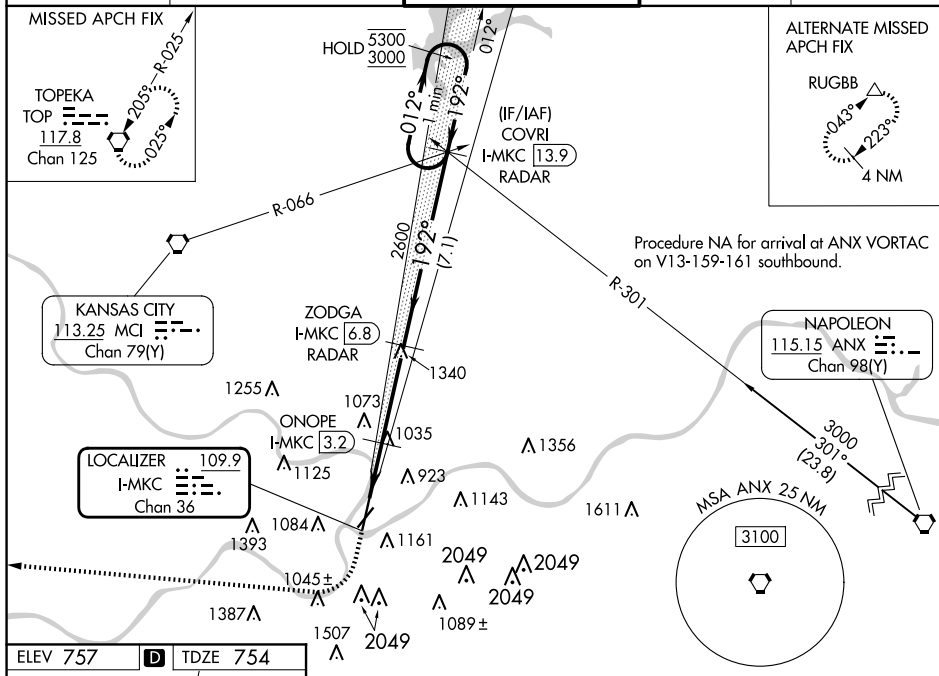


ILS or LOC RWY 19
KANSAS CITY DOWNTOWN/WHEELER FLD (MKC)

MAISE

MISSED APPROACH: Climb to 1300 then climbing right turn to 4000 direct TOP VORTAC and hold.



ILS and Radar Coverage Data

Category	A	B	C	D
S-ILS 19	1004/40 250 (300-¾)			
S-LOC 19	1460/40 706 (800-¾)	1460/55 706 (800-1)	1460-1 7/8	706 (800-1 1/8)
CIRCLING	1460-1 703 (800-1)		1460-2 703 (800-2)	1540-2 1/2 783 (800-2 1/2)
ONOE FIX MINIMUMS				
S-LOC 19	1300/40	546 (600-¾)	1300-1 3/8	546 (600-1 3/8)
CIRCLING	1380-1 623 (700-1)	1400-1 643 (700-1)	1460-2 703 (800-2)	1540-2 1/2 783 (800-2 1/2)