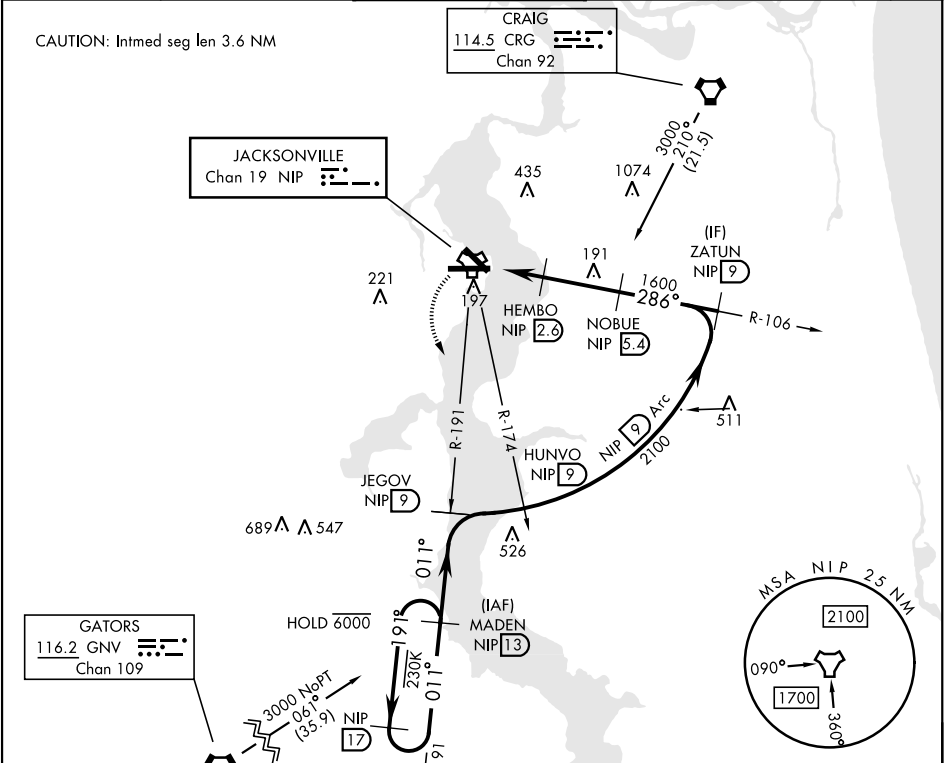


TACAN Y RWY 28

TACAN NIP Chan 19	APCH CRS 286°	Rwy ldg TDZE 13 Arpt Elev 23	[USN]	JACKSONVILLE NAS (TOWERS FLD)	(KNIP)
* When ALS inop, increase CAT AB vis to 1 mile, CAT CD vis to 1½ miles.			SALSF A2	MISSED APPROACH: Climb to 2000 direct NIP TACAN and turn left outbound R-191 to MADEN and hold.	
ATIS 124.35 290.425	APP CON 127.775 377.075	NAVY TACAN TOWER 125.15 (CTAF) 340.2	GND CON 128.6 336.4	CLNC DEL 134.775 353.675	ASR/ PAR



• 249	EMERG SAFE ALT 100 NM 2800			
2000 NIP	NIP R-191	MADEN NIP 13	NOBUE ZATUN HUNVO JEGOV MADEN	
NIP TACAN	HEMBO NIP 2.6	NOBUE ZATUN HUNVO JEGOV MADEN		
GRUEN NIP 1.1	NIP 1.6	2.99° TCH 60	2100 1600	3000
0.5	1.5 NM	2.8 NM		
CATEGORY	A	B	C	D
S-28*	400-¾ 387 (400-¾)		400-7/8 387 (400-7/8)	
CIRCLING	500-1 477 (500-1)		560-1½ 537 (600-1½)	780-2½ 757 (800-2½)

ELEV 23 TDZE 13

Rwy 10 ldg 8006'  
Rwy 14 ldg 3244'

HIRL Rwy 10-28

TACAN Y RWY 28

SE-3, 10 JUL 2025 to 07 AUG 2025

SE-3, 10 JUL 2025 to 07 AUG 2025