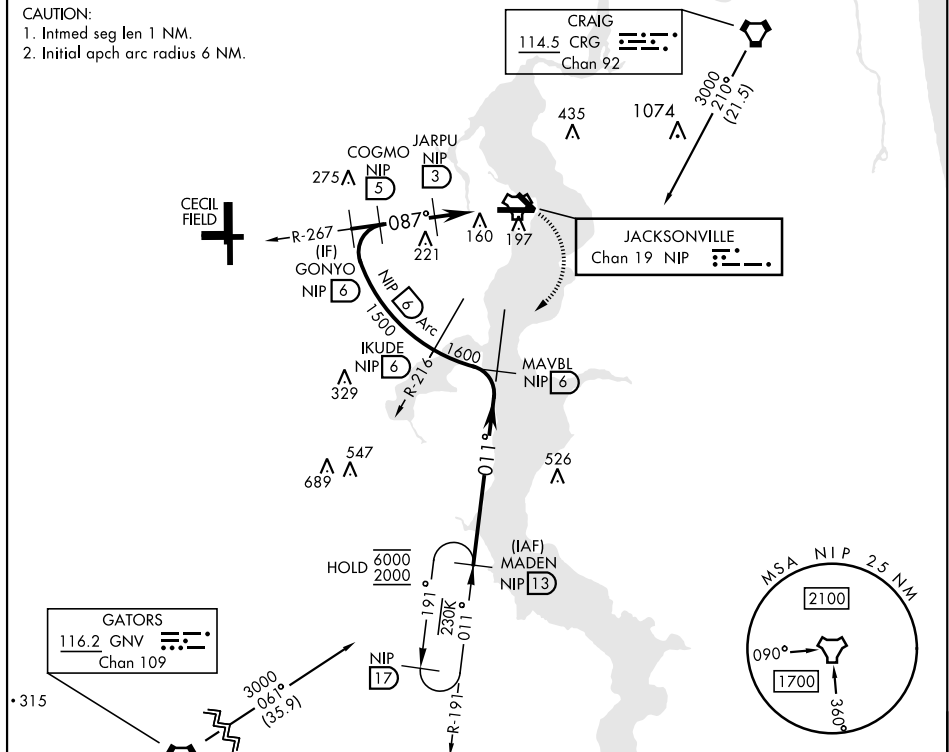


TACAN Y RWY 10

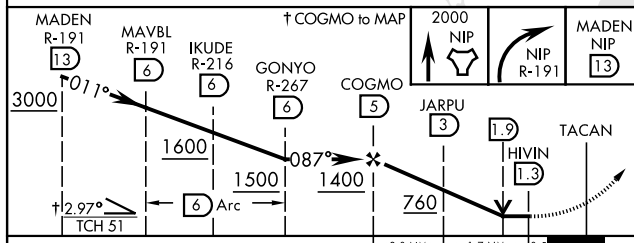
TACAN NIP Chan 19		APCH CRS 087°	Rwy Idg 8006 TDZE 21 Arprt Elev 23	[USN]	JACKSONVILLE NAS (TOWERS FLD) (KNIP)				
<div><div><div><div><div></div><div></div></div><div><div></div><div></div></div></div><div><div></div><div></div></div></div><div>*When ALS inop, increase CAT AB vis to 1 mile, CAT CD vis to 1½ miles.</div></div>					<div><div>ALSF-1</div><div><div><div></div><div></div></div><div><div></div><div></div></div></div><div><div></div><div></div></div></div>		MISSED APPROACH: Climb to 2000 direct NIP TACAN and turn right outbound R-191 to MADEN and hold.		
ATIS 124.35 290.425		APP CON 127.775 377.075		NAVY JACKSONVILLE TOWER 125.15 (CTAF) 340.2		GND CON 128.6 336.4		CLNC DEL 134.775 0353.675	ASR/ PAR

CAUTION:

1. Intmed seg len 1 NM.
2. Initial apch arc radius 6 NM.



EMERG SAFE ALT 100 NM 2800



CATEGORY	A	B	C	D
S-10 *	420- $\frac{1}{2}$ 399 (400- $\frac{1}{2}$)		420- $\frac{3}{4}$ 399 (400- $\frac{3}{4}$)	
CIRCLING	500-1 477 (500-1)		560-1 $\frac{1}{2}$ 537 (600-1 $\frac{1}{2}$)	780-2 $\frac{1}{2}$ 757 (800-2 $\frac{1}{2}$)

ELEV	23	TDZE	21
Rwy 10 ldg 8006' Rwy 14 ldg 3244'			