

JACKSONVILLE, FLORIDA

RNAV (GPS) Z RWY 10

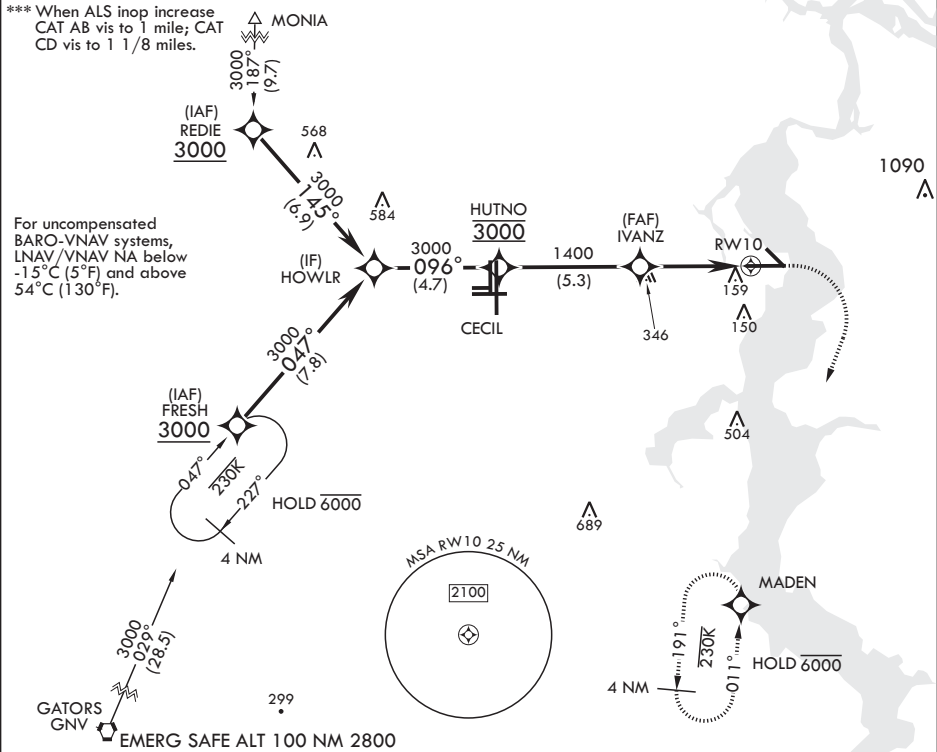
WAAS CH 42020 W10A	APCH CRS 096°	Rwy ldg TDZE 21	8006 Arprt Elev 23
--------------------------	------------------	--------------------	-----------------------

- (USN)

JACKSONVILLE NAS (TOWERS FLD) (KNIP)

RNP APCH	ALSIF-1	MISSED APPROACH: Climb to 600 then climbing right turn to 2000 direct MADEN and hold.
* When ALS inop increase CAT ABCD vis to 3/4 mile. ** When ALS inop, increase CAT ABCD vis to 1 mile.		

ATIS 124.35 290.425	APP CON/DEP CON 127.775 377.075	TOWER 125.15 (CTAF) 340.2	GND CON 128.6 336.4	CLNC DEL 134.775 353.675	ASR/PAR
------------------------	------------------------------------	------------------------------	------------------------	-----------------------------	---------



HOWLR 3000	HUTNO 3000	IVANZ 1400	1.2 NM to RW10	RW10	ELEV 23	TDZE 21
GP 3.00° TCH 51			4.1 NM		Rwy 10 ldg 8006' Rwy 14 ldg 3244'	
CATEGORY	A	B	C	D		
LPV DA*	221-1/2	200	(200-1/2)			
LNAV/VNAV DA**	387-5/8	366	(400-5/8)			
LNAV MDA***	440-1/2 419 (500-1/2)	440-3/4 419 (500-3/4)				
CIRCLING	500-1 477 (500-1)	560-1 537 (600-1 1/2)	780-2 757 (800-2 1/2)		HIRL Rwy 10-28	

JACKSONVILLE, FLORIDA

30°14'N - 81°41'W

JACKSONVILLE NAS (TOWERS FLD) (KNIP)

Amdt 1 03NOV22

RNAV (GPS) Z RWY 10

SE-3, 10 JUL 2025 to 07 AUG 2025

SE-3, 10 JUL 2025 to 07 AUG 2025