

APCH CRS	Rwy ldg	9003
276°	TDZE	13
	Arpt Elev	23

- (USN)

JACKSONVILLE NAS (TOWERS FLD) (KNIP)

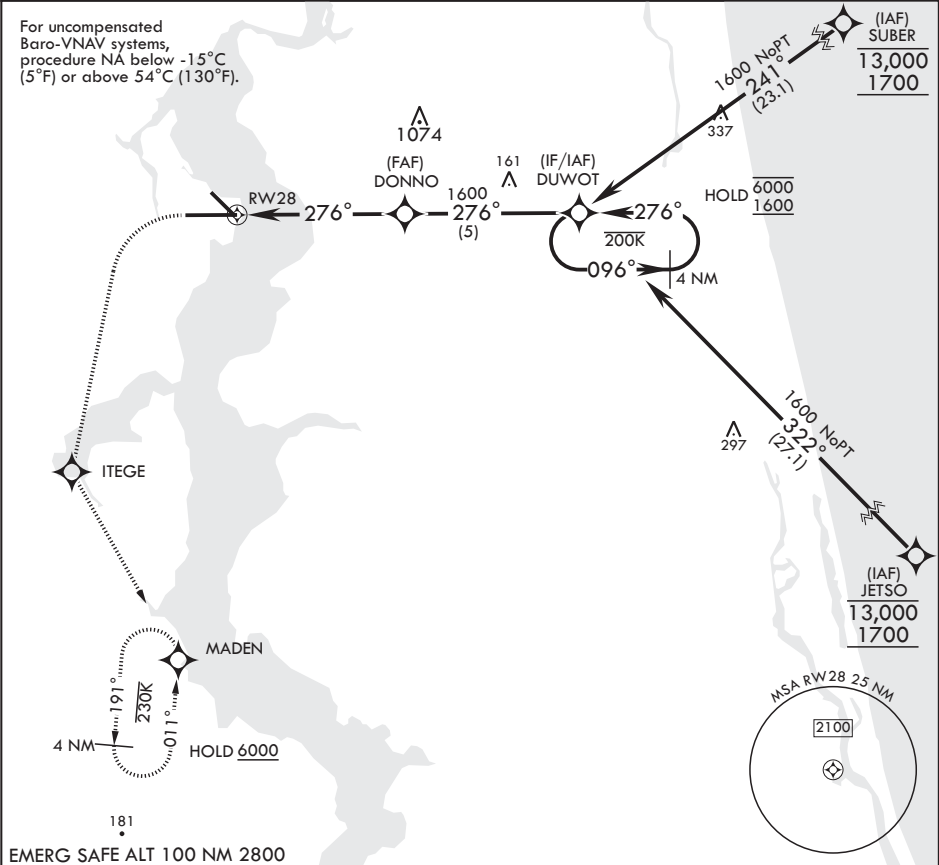
RNP AR APCH

▼ * When ALS inop increase CAT ABCD vis to 7/8 mile.

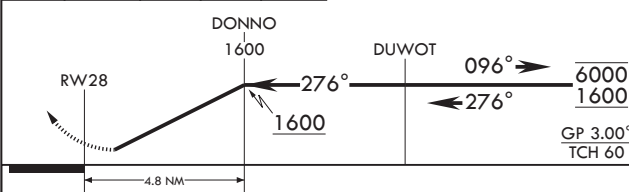


MISSED APPROACH: Climb to 600 then climbing left turn to 2000 direct ITEGE, track 156° to MADEN and hold.

ATIS	APP CON/DEP CON	TOWER	GND CON	CLNC DEL	ASR/PAR
124.35 290.425	127.775 377.075	125.15 (CTAF) 340.2	128.6 336.4	134.775 0 353.675	

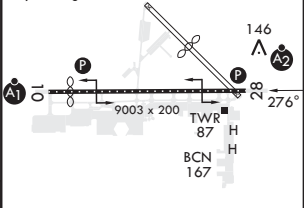


600	2000	ITEGE	tr 156°	MADEN
crs 276°				



ELEV 23	TDZE 13
---------	---------

Rwy 10 ldg 8006'
Rwy 14 ldg 3244'



CATEGORY	A	B	C	D
RNP 0.30 DA*	310-¾	297	(300-¾)	

HIRL Rwy 10-28