

RNAV (RNP) Y RWY 10

APCH CRS	Rwy ldg	8006
096°	TDZE	21
	Arpt Elev	23

- (USN)

JACKSONVILLE NAS (TOWERS FLD) (KNIP)

RNP AR APCH - RF required.



MISSED APPROACH: Climb to 600 then climbing right turn to 2000 direct MADEN and hold.

▼ \* When ALS inop increase vis to 1 mile.

ATIS	APP CON/DEP CON	TOWER	GND CON	CLNC DEL	ASR/PAR
124.35 290.425	127.775 377.075	125.15 (CTAF) 340.2	128.6 336.4	134.775 353.675	

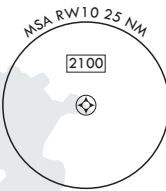
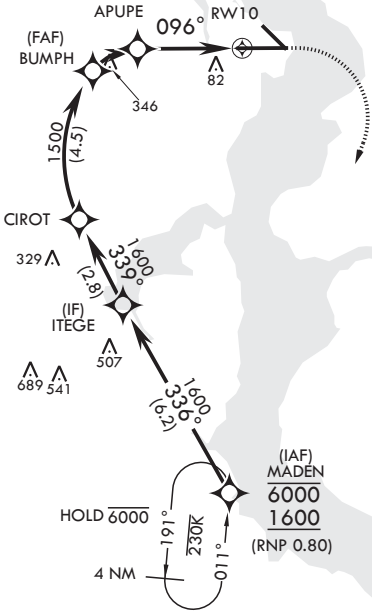
For uncompensated Baro-VNAV systems, procedure NA below -15°C (5°F) or above 54°C (130°F).



CECIL

1074  
A

AUTHORIZATION  
REQUIRED



306  
EMERG SAFE ALT 100 NM 2800

