

HI-TACAN Z RWY 10

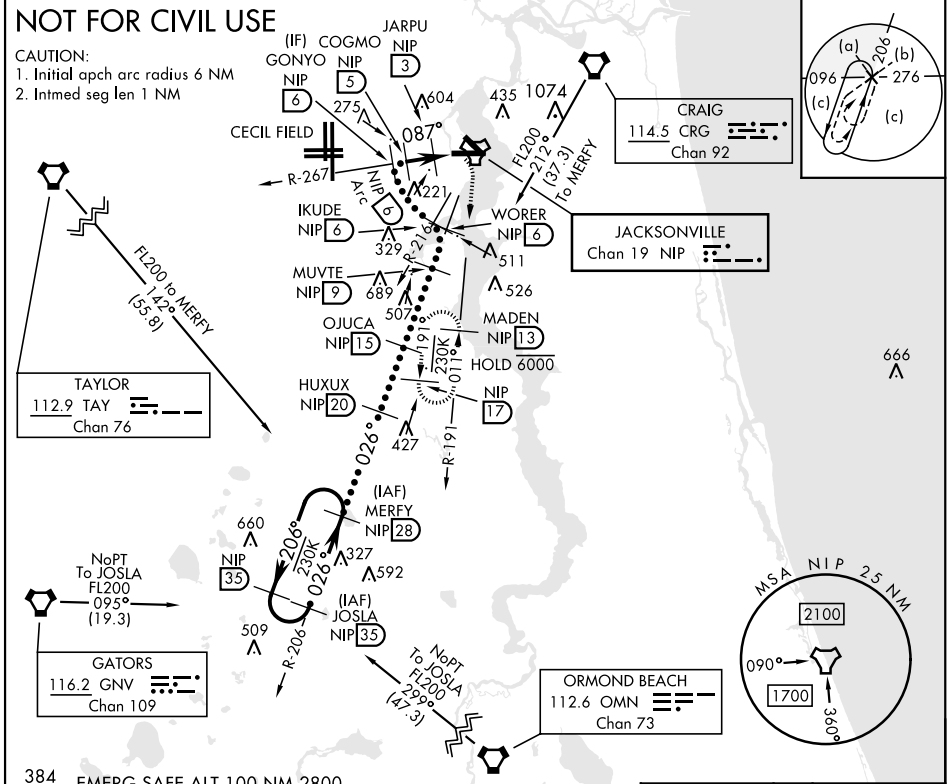
TACAN Chan 19	NIP	APCH CRS 087°	Rwy ldg TDZE Arpt Elev 8006 21 23	[USN]	JACKSONVILLE NAS (TOWERS FLD)	(KNIP)
-------------------------	-----	-------------------------	---	-------	-------------------------------	--------

ALSF-1

*** When ALS inop, increase CAT CDE vis to 1½ miles.**

MISSED APPROACH: Climb to 2000 direct NIP
TACAN, outbound R-191 to MADEN and hold.

ATIS 124.35 290.425	APP CON 127.775 377.075	NAVY JACKSONVILLE TOWER 125.15 (CTAF) 340.2	GND CON 128.6 336.4	CLNC DEL 134.775 353.675	ASR/ PAR
-------------------------------	-----------------------------------	---	-------------------------------	------------------------------------	-------------



EMERG SAFE ALT 100 NM 2800				ELEV 23		TDZE 21	
MERFY R-206		HUXUX		MUVTE		† COGMO to MAP	
28		20		9		2000 NIP	
OJUCA		WORER R-206		IKUDE		NIP R-191	
15		6		6		MADEN NIP 13	
FL200 13,000		8000		GONYO R-267		COGMO	
026°		4000		JARPU		NIP 1.9	
1700		1600		TACAN		HIVIN 1.3	
1500		1400		087°		760	
†2.97° TCH 51		NIP 6 Arc		2 NM		1.7 NM	
				.5			
CATEGORY		C		D		E	
S-10 *		420-¾		399 (400-¾)			
CIRCLING		560-1½ 537 (600-1½)		780-2½ 757 (800-2½)		920-3 897 (900-3)	

Rwy 10 ldg 8006'
Rwy 14 ldg 3244'

087°

10.1

9003 x 200

28

TWR 87 167

160

