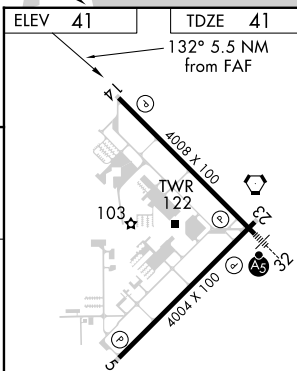
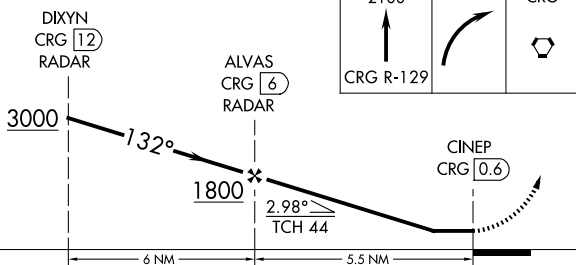
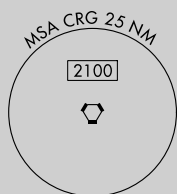
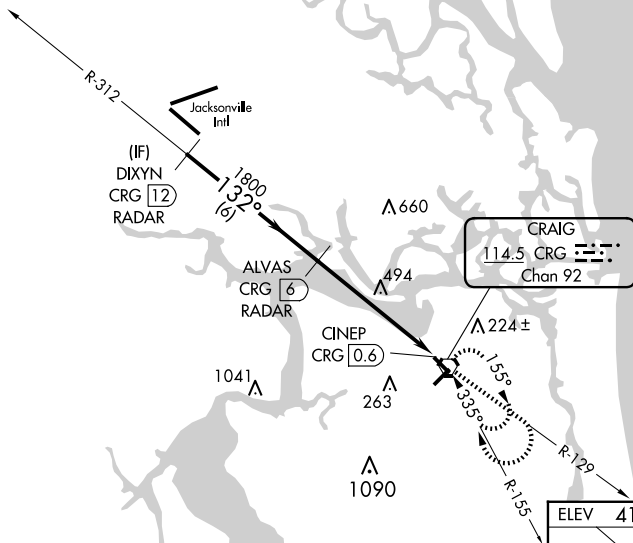


VOR RWY 14
JACKSONVILLE EXEC AT CRAIG (CRG)




MISSED APPROACH: Climb to 2100 via CRG VORTAC R-129 then right turn direct CRG VORTAC and hold.

ATIS 125.4	JACKSONVILLE APP CON 124.9 308.4	CRAIG TOWER ★ 132.1 (CTAF) 0 269.525	GND CON 121.8	CLNC DEL 118.35	UNICOM 122.95
----------------------	--	--	-------------------------	---------------------------	-------------------------

RADAR REQUIRED



CATEGORY	A	B	C	D
S-14	800-1 759 (800-1)	800-1¼ 759 (800-1¼)	800-2½	759 (800-2½)
CIRCLING	800-1 759 (800-1)	800-1¼ 759 (800-1¼)	800-2½	759 (800-2½)

MIRL Rwy 5-23 					
HIRL Rwy 14-32 					
REIL Rwys 14 and 23 					
FAF to MAP 5.5 NM					
Knots	60	90	120	150	180
Min:Sec	5:30	3:40	2:45	2:12	1:50

SE-3, 10 JUL 2025 to 07 AUG 2025