

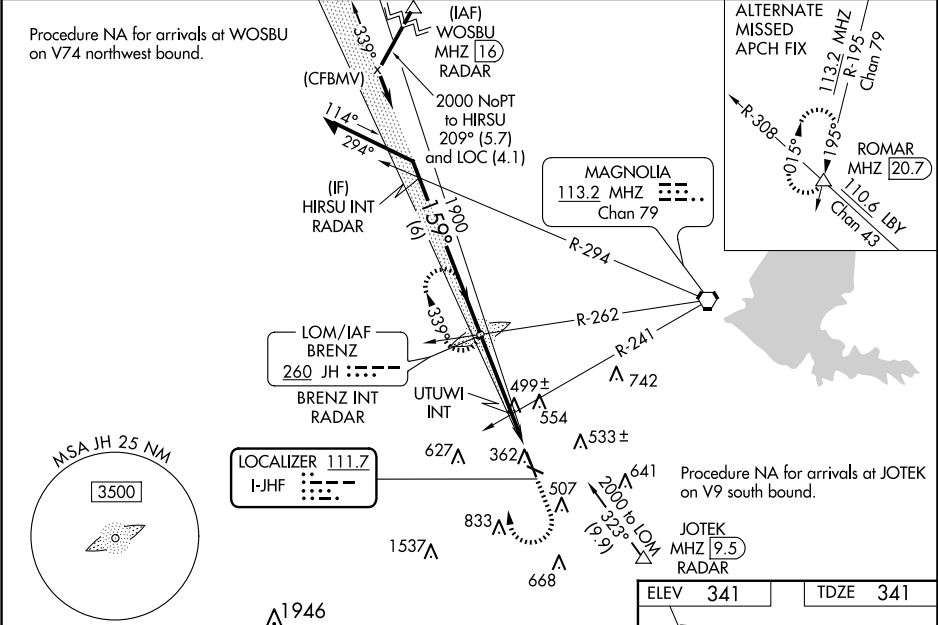
LOC I-JHF 111.7	APP CRS 159°	Rwy Idg TDZE Apt Elev 5387 341 341	ILS or LOC RWY 16 HAWKINS FLD (HKS)
---------------------------	------------------------	--	--

⚠ When local altimeter setting not received, use Jackson-Medgar Wiley Evers Intl altimeter setting, increase all DA 19 feet and all MDA 20 feet, increase Circling Cat C visibility ¼ mile and UTUWI fix Circling Cat C visibility ¼ mile. For inop MALS, increase S-LOC 16 Cats C/D visibility ¾, increase UTUWI fix S-LOC 16 Cats C/D visibility ¾. For inop MALS when using Jackson-Medgar Wiley Evers Intl altimeter setting increase S-LOC Cats C/D visibility ¾. Glideslope unusable when control tower closed, only localizer minimums authorized during this period. ADF required.

MALS

MISSED APPROACH: Climb to 2000 then climbing right turn to 3500 direct BRENZ LOM and hold.

ASOS 120.625	JACKSON APP CON ★ 123.9 319.2	HAWKINS TOWER ★ 119.65 (CTAF) 0 257.8	GND CON 121.9 239.0	CLNC DEL 121.9 (When twr closed)	UNICOM 122.95
------------------------	---	---	-------------------------------	---	-------------------------



ELEV 341		TDZE 341	
159° 4.6 NM from FAF		TWR 397	
REIL Rwy 34		HIRL Rwy 16-34	
MIRL Rwy 11-29		FAF to MAP 4.6 NM	
Knots		Min:Sec	
60		4:36	
90		3:04	
120		2:18	
150		1:50	
180		1:32	

CATEGORY	A	B	C	D
S-ILS 16		541-½	200 (200-½)	
S-LOC 16	840-½	499 (500-½)	840-1	499 (500-1)
CIRCLING	860-1 519 (600-1)	880-1 539 (600-1)	1140-2¼ 799 (800-2¼)	1320-3 979 (1000-3)
UTUWI FIX MINIMUMS (DUAL VOR RECEIVERS REQUIRED)				
S-LOC 16	760-½	419 (500-½)	760-¾	419 (500-¾)
CIRCLING	860-1 519 (600-1)	880-1 539 (600-1)	1140-2¼ 799 (800-2¼)	1320-3 979 (1000-3)