

WAAS CH <b>50306</b> <b>W05B</b>	APP CRS <b>050°</b>	Rwy Idg <b>10000</b> TDZE <b>791</b> Apt Elev <b>796</b>
--	------------------------	--

RNAV (GPS) Y RWY 5R

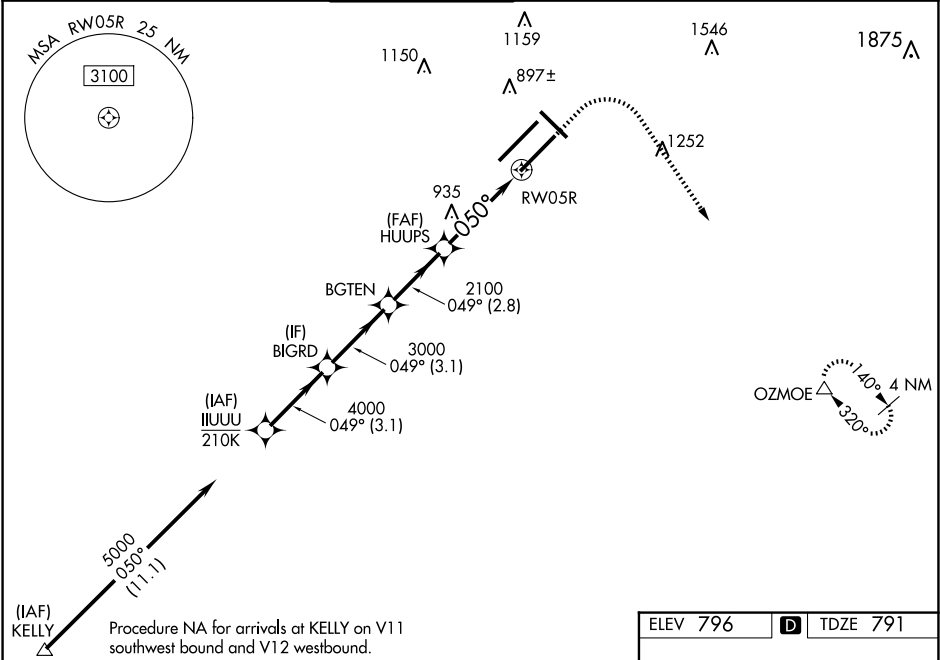
INDIANAPOLIS INTL (IND)

▼ For uncompensated Baro-VNAV systems, LNAV/VNAV NA below -18°C (0°F) or above 54°C (130°F). DME/DME RNP-0.3 NA. Simultaneous approach authorized. LNAV procedure NA during simultaneous operations. Use of FD or AP providing RNAV track guidance required during simultaneous operations.

ALSF-2

MISSED APPROACH:  
Climb to 1500 then climbing right turn to 3000 direct OZMOE and hold.

D-ATIS <b>134.25</b>	INDIANAPOLIS APP CON <b>128.175 317.8</b>	INDY TOWER <b>120.9 251.1</b>	GND CON <b>121.9</b>	CLNC DEL <b>128.75 251.1</b>	CPDLC
-------------------------	--	----------------------------------	-------------------------	---------------------------------	-------



VGSIs and RNP glidepath not coincident (VGSi Angle 3.00/TCH 71).				
1500 3000 OZMOE				
*LNAV only.				
IIUUU				
BIGRD				
5000 049°				
4000				
GP 3.00° TCH 50				
3.1 NM 3.1 NM 2.8 NM 2.9 NM 1.1 NM				
BGTEN				
HUUPS				
2100				
*1.1 NM to RW05R				
RW05R				
050°				
CATEGORY	A	B	C	D
LPV DA	991/18 200 (200-½)			
LNAV/VNAV DA	1172/40 381 (400-¾)			
LNAV MDA	1220/24	429 (500-½)	1220/40	429 (500-¾)
CIRCLING	1420-1	624 (700-1)	1420-1¾ 624 (700-1¾)	1560-2½ 764 (800-2½)

