

WAAS CH 45706 W05A	APP CRS 050°	Rwy Idg 11200 TDZE 747 Apt Elev 796
----------------------------------------	------------------------	----------------------------------------------------------------

RNAV (GPS) Y RWY 5L

INDIANAPOLIS INTL (IND)

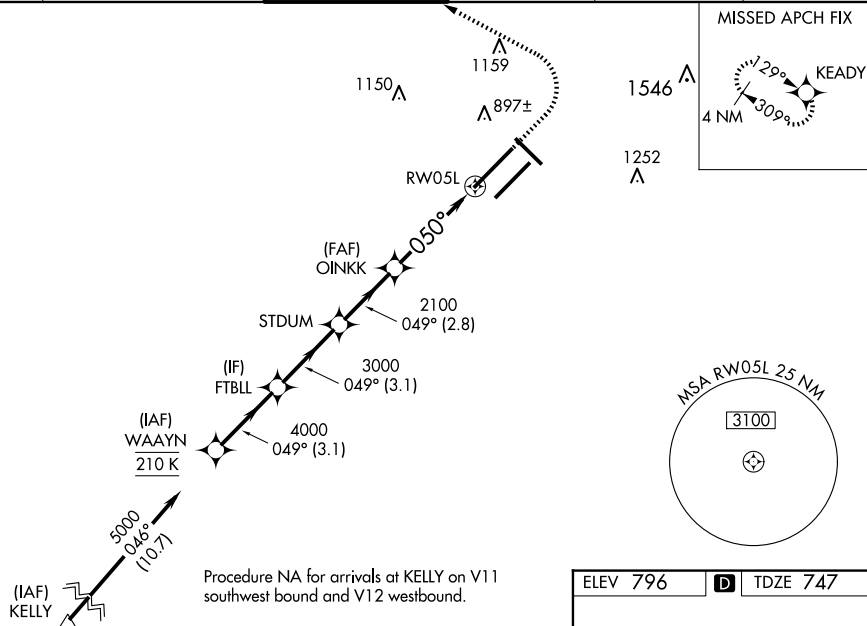
T
A

For uncompensated Baro-VNAV systems, LNAV/VNAV NA below -18°C (0°F) or above 54°C (130°F). DME/DME RNP-0.3 NA. Simultaneous approach authorized. LNAV procedure NA during simultaneous operations. Use of FD or AP providing RNAV track guidance required during simultaneous operations. For inoperative ALS, increase LNAV/VNAV all Cats visibility to 1¼ SM and increase LNAV Cat C/D visibility to 1¼ SM.

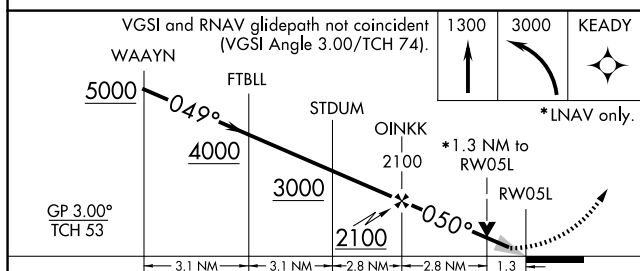
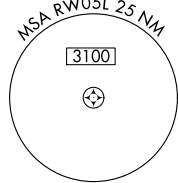
ALSF-2


MISSED APPROACH:
Climb to 1300 then
climbing left turn to
3000 direct KEADY
and hold.

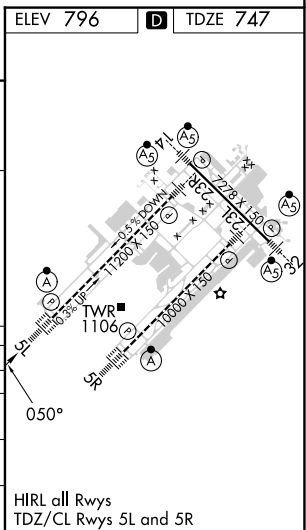
D-ATIS 134.25	INDIANAPOLIS APP CON 128.175 317.8	INDY TOWER 120.9 251.1	GND CON 121.9	CLNC DEL 128.75 251.1	CPDLC
------------------	---------------------------------------	---------------------------	------------------	--------------------------	-------



Procedure NA for arrivals at KELLY on V11 southwest bound and V12 westbound.



CATEGORY		A	B	C	D
LPV	DA	947/18 200 (200-½)			
LNAV/ VNAV	DA	1136/45 389 (400-¾)			
LNAV	MDA	1220/24 473 (500-½)		1220/50 473 (500-1)	
 CIRCLING		1420-1 624 (700-1)		1420-1¾ 624 (700-1¾)	1560-2½ 764 (800-2½)



RNAV (GPS) Y RWY 5L