

| | | | |
|---------------|---------|----------|-------|
| LOC/DME I-QQV | APP CRS | Rwy ldg | 10000 |
| 111.15 | 050° | TDZE | 791 |
| Chan 48(Y) | | Apt Elev | 796 |

ILS or LOC RWY 5R

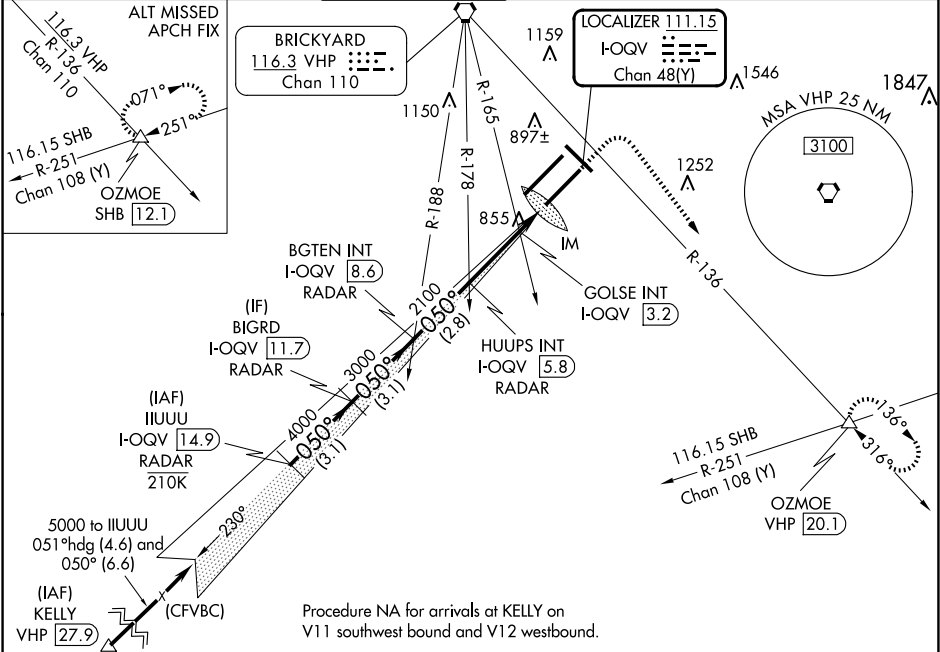
INDIANAPOLIS INTL (IND)

DME or RADAR required.
Simultaneous approach authorized.

ALSf-2

MISSED APPROACH: Climb to 1500 then climbing right turn to 3000 on heading 148° and on VHP VORTAC R-136 to OZMOE INT/VHP 20.1 DME and hold.

| | | | | | |
|--------|----------------------|-------------|---------|--------------|-------|
| D-ATIS | INDIANAPOLIS APP CON | INDY TOWER | GND CON | CLNC DEL | CPDLC |
| 134.25 | 128.175 317.8 | 120.9 251.1 | 121.9 | 128.75 251.1 | |



| | | | | | | | |
|--|---------|-------------|-----------|----------------------|-------------|----------------------|----------|
| IIUUU VGS1 and ILS glidepath not coincident (VGS1 Angle 3.00/TCH 71). | | 1500 | 3000 | OZMOE | ELEV 796 | D | TDZE 791 |
| I-OQV 14.9 BIGRD RADAR I-OQV 11.7 BG TEN INT I-OQV 8.6 HUUPS INT I-OQV 5.8 GOLSE INT I-OQV 3.2 | | hdg 148° | VHP R-136 | △ | | | |
| 5000 050° 4000 3000 2100 *1240 | | *LOC only. | | | | | |
| GS 3.00° TCH 50 | | 3.1 NM | 3.1 NM | 2.8 NM | 2.6 NM | 1.2 | 0.2 |
| CATEGORY | A | | B | | C | D | |
| S-ILS 5R | | | 991/18 | | 200 (200-½) | | |
| S-LOC 5R | 1240/24 | 449 (500-½) | | 1240/45 | | 449 (500-¾) | |
| CIRCLING | 1420-1 | 624 (700-1) | | 1420-1¾ 624 (700-1¾) | | 1560-2½ 764 (800-2½) | |
| GOLSE FIX MINIMUMS (DUAL VOR RECEIVERS or DME REQUIRED) | | | | | | | |
| S-LOC 5R | 1160/24 | 369 (400-½) | | 1160/35 | | 369 (400-¾) | |
| CIRCLING | 1420-1 | 624 (700-1) | | 1420-1¾ 624 (700-1¾) | | 1560-2½ 764 (800-2½) | |

HIRL all Rwy's
TDZ/CL Rwy's 5L and 5R

FAF to MAP 4 NM

| | | | | | |
|---------|------|------|------|------|------|
| Knots | 45 | 60 | 75 | 90 | 105 |
| Min:Sec | 5:20 | 4:00 | 3:12 | 2:40 | 2:17 |