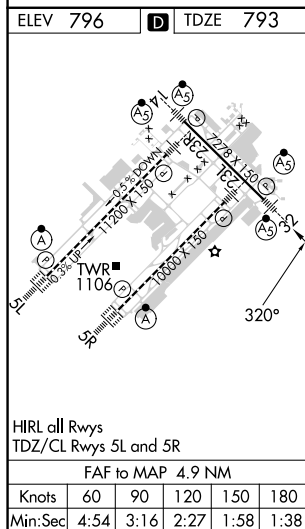
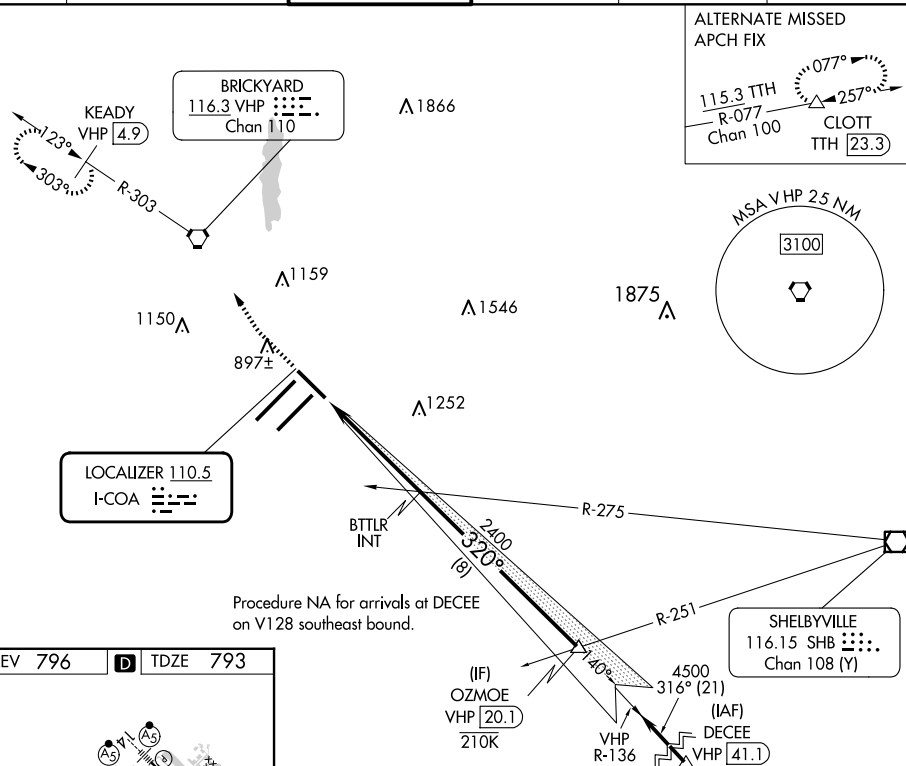



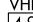
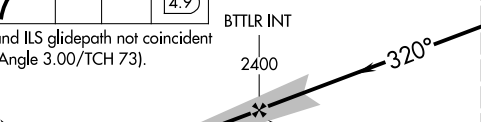

ILS or LOC RWY 32
INDIANAPOLIS INTL (IND)

MALSR

MISSED APPROACH: Climb to 1500 then climbing right turn to 3000 direct VHP VORTAC and on VHP R-303 to KEADY/VHP 4.9 DME and hold.

D-ATIS 134.25	INDIANAPOLIS APP CON 128.175 317.8	INDY TOWER 120.9 251.1	GND CON 121.9	CLNC DEL 128.75 251.1	CPDLC
------------------	---------------------------------------	---------------------------	------------------	--------------------------	-------



1500 ↑	3000 ↗	VHP R-303 	KEADY VHP 4.9 		
VGS1 and ILS glidepath not coincident (VGS1 Angle 3.00/TCH 73).				BTTLR INT 2400 320° 4500 GS 3.00° TCH 53	
CATEGORY	A	B	C	D	
S-ILS 32	# 993/24 200 (200-½)				
S-LOC 32	1280/24 487 (500-½)		1280/50 487 (500-1)		
 CIRCLING	1420-1 624 (700-1)		1420-1¾ 624 (700-1¾)		1560-2½ 764 (800-2½)