

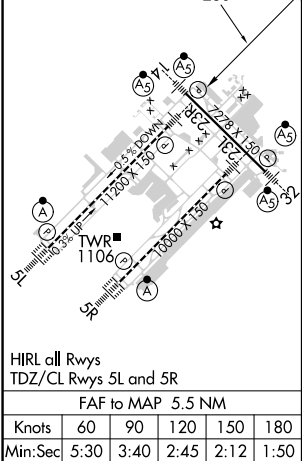
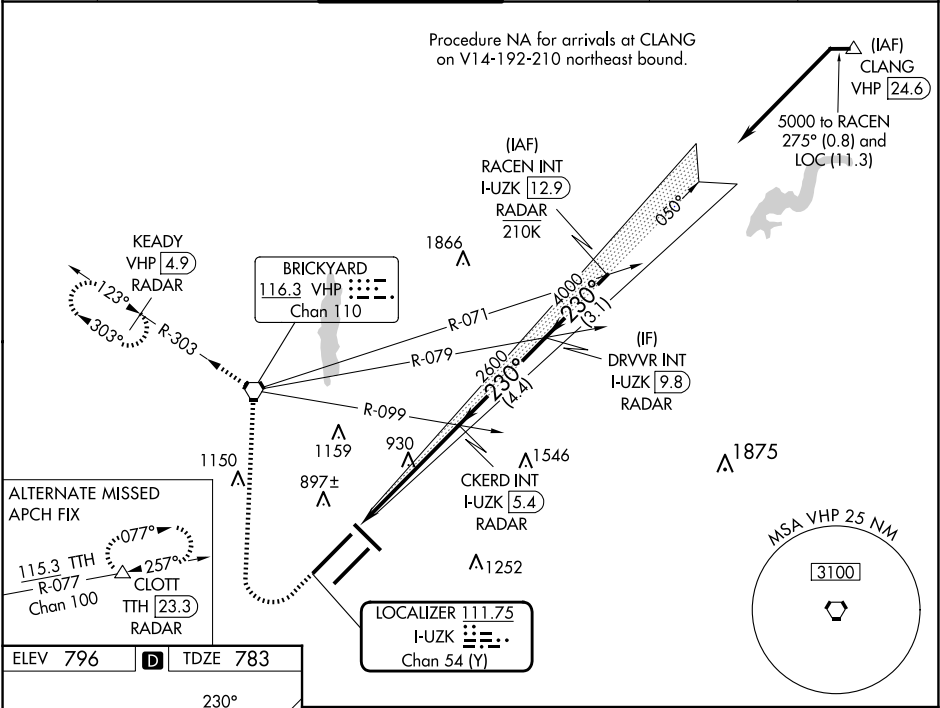
LOC/DME I-UKZ 111.75 Chan 54 (Y)	APP CRS 230°	Rwy Idg 11200 TDZE 783 Apt Elev 796
--	------------------------	--



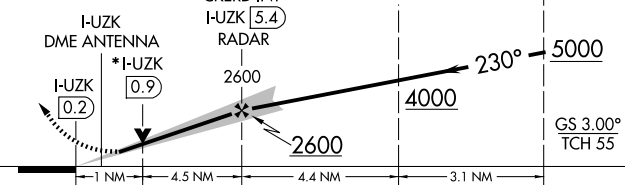

ILS or LOC RWY 23R

INDIANAPOLIS INTL (IND)

<div><div>Simultaneous approach authorized. DME or RADAR required. **RVR 1800 authorized with use of FD or AP or HUD to DA.</div></div>	<div><div>MALSR</div><div>MISSED APPROACH: Climb to 1500 then climbing right turn to 3000 direct VHP VORTAC and on VHP R-303 to KEADY/VHP 4.9 DME/RADAR and hold.</div></div>
---	---

D-ATIS 134.25	INDIANAPOLIS APP CON 128.175 317.8	INDY TOWER 120.9 251.1	GND CON 121.9	CLNC DEL 128.75 251.1	CPDLC
-------------------------	--	----------------------------------	-------------------------	---------------------------------	-------



1500 ↑	3000 ↗	VHP R-303 	KEADY VHP 4.9 RADAR	VGSI and ILS glidepath not coincident (VGSI Angle 3.00/TCH 71).	
*LOC only.				RACEN INT I-UKZ 12.9 RADAR	
I-UKZ DME ANTENNA *I-UKZ 0.9 		CKERD INT I-UKZ 5.4 RADAR	DRVVR INT I-UKZ 9.8 RADAR		
					
CATEGORY	A		B	C	D
S-ILS 23R **	983/24		200 (200-½)		
S-LOC 23R	1180/24	397 (400-½)	1180/35	397 (400-¾)	
 CIRCLING	1420-1	624 (700-1)	1420-1¾ 624 (700-1¾)	1560-2½ 764 (800-2½)	