

ILS RWY 5L (SA CAT I)  
INDIANAPOLIS INTL (IND)

**MISSED APPROACH:** Climb to 1700 then climbing left turn to 3000 direct VHP VORTAC then on VHP VORTAC R-303 to KEADY/VHP 4.9 DME/RADAR and hold.

**MISSED APCH FIX**

R-303 123° 303° 116.3 VHP Chan 110

KEADY VHP 4.9 RADAR

OINKK INT I-IND 6.1 RADAR

STDUM I-IND 9 RADAR

(IF) FTBL I-IND 12.1 RADAR

(IAF) WAAYN I-IND 15.2 RADAR 210K

5000 to WAAYN 004° (0.9) and LOC (10.1)

(IAF) KELLY (CFVDC) VHP 27.9

**RADAR or DME REQUIRED**

MSA VHP 25 NM 3100

**ALTERNATE MISSED APCH FIX**

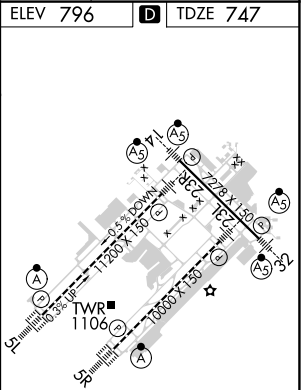
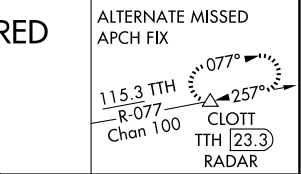
115.3 TTH R-077 Chan 100 CLOTT TTH 23.3 RADAR

**LOCALIZER 111.75**  
I-IND Chan 54(Y)

**Procedure NA for arrivals at KELLY on V11 southwest bound and V12 westbound.**

**ELEV 796** **D** **TDZE 747**

SA CATEGORY I ILS - SPECIAL AIRCREW  
& AIRCRAFT CERTIFICATION REQUIRED



HIRL all Rwy's  
TDZ/CL Rwy's 5L and 5R

EC-2, 10 JUL 2025 to 07 AUG 2025