

LOC/DME I-UZK <b>111.75</b> Chan <b>54 (Y)</b>	APP CRS <b>230°</b>	Rwy Idg <b>11200</b> TDZE <b>783</b> Apt Elev <b>796</b>
--	------------------------	--

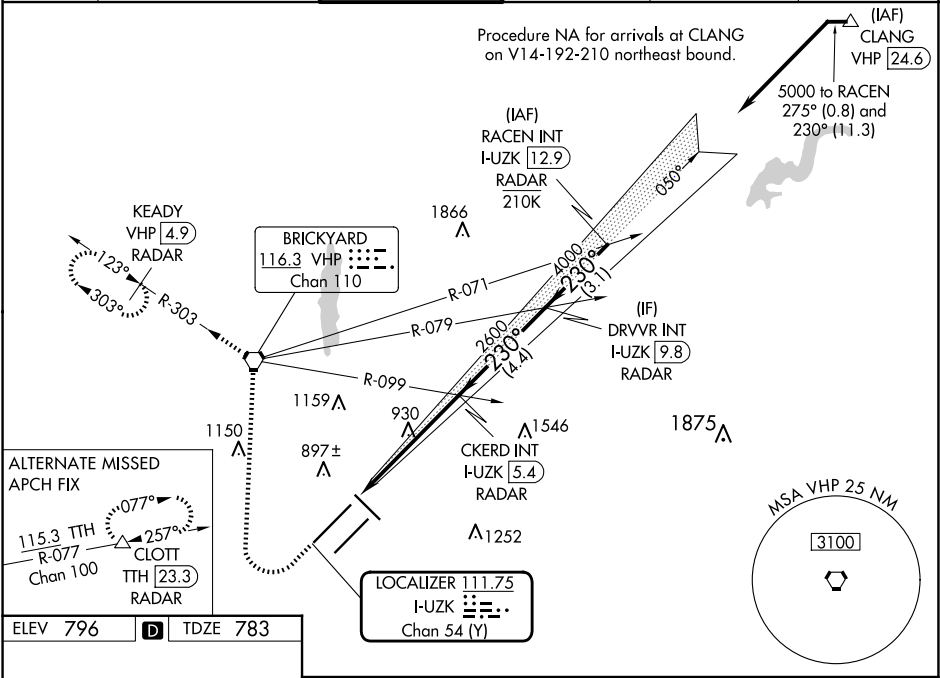
ILS RWY 23R (SA CAT I & II)  
INDIANAPOLIS INTL (IND)

**⚠** Simultaneous approach authorized. DME or RADAR required. Requires specific OPSPEC, MSPEC, or LOA approval and use of HUD to DH. Reduced lighting: requires specific OPSPEC, MSPEC, or LOA approval and use of autoland or HUD to touchdown.

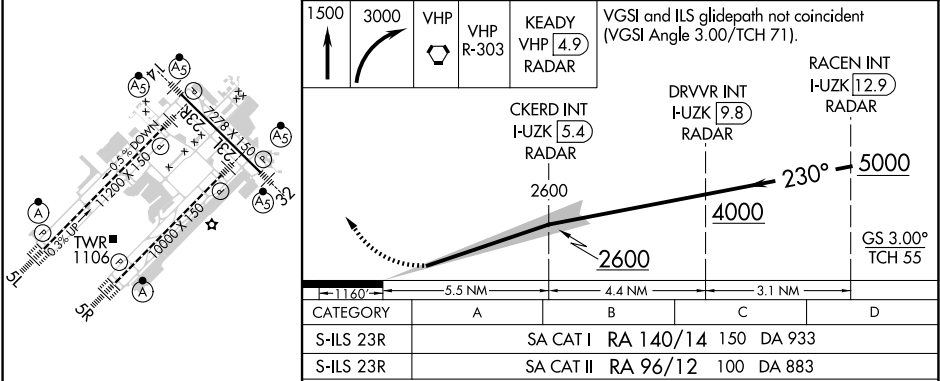
**MALSR**

**MISSED APPROACH:** Climb to 1500 then climbing right turn to 3000 direct VHP VORTAC and on VHP R-303 to KEADY/VHP 4.9 DME/RADAR and hold.

D-ATIS <b>134.25</b>	INDIANAPOLIS APP CON <b>128.175 317.8</b>	INDY TOWER <b>120.9 251.1</b>	GND CON <b>121.9</b>	CLNC DEL <b>128.75 251.1</b>	CPDLC
-------------------------	--	----------------------------------	-------------------------	---------------------------------	-------



ELEV <b>796</b>	<b>D</b>	TDZE <b>783</b>
-----------------	----------	-----------------



HIRL all Rwys  
TDZ/CL Rwys 5L and 5R

INDIANAPOLIS, INDIANA  
Amdt 6 29MAR18

INDIANAPOLIS INTL (IND)

**SA CATEGORY I & II ILS - SPECIAL AIRCREW & AIRCRAFT CERTIFICATION REQUIRED**

EC-2, 10 JUL 2025 to 07 AUG 2025

EC-2, 10 JUL 2025 to 07 AUG 2025