

WAAS
CH **77514**
W30A

APP CRS
301°

Rwy Idg
TDZE
Apt Elev
7201
1286
1289

RNAV (GPS) RWY 30

HURON RGNL (HON)

RNP APCH.

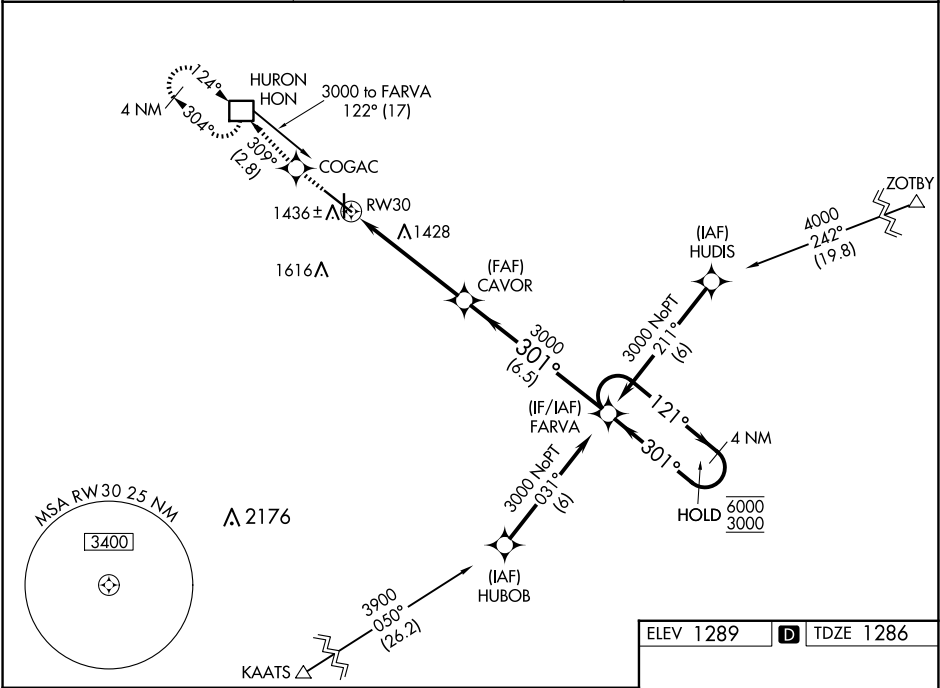
▼

⚠

Circling Rwy 18, 36 NA at night. Rwy 30 helicopter visibility reduction below $\frac{3}{4}$ SM NA. For uncompensated Baro-VNAV systems, LNAV/VNAV NA below -17°C or above 54°C.

MISSED APPROACH: Climb to 3000 direct COGAC and on track 309° to HON DME and hold.

ASOS 118.125	MINNEAPOLIS CENTER 126.25 339.8	UNICOM 123.0 (CTAF) 0
------------------------	-------------------------------------------	---------------------------------



3000	COGAC	HON	CAVOR	FARVA	4 NM Holding Pattern
↑	✦	tr 309°	3000	3000	
*LNAV only					
CATEGORY	A	B	C	D	
LPV DA	1559-1 273 (300-1)				
LNAV/VNAV DA	1721-1½ 435 (500-1½)				
LNAV MDA	1760-1 474 (500-1)	1760-1⅜ 474 (500-1½)	1760-1½ 474 (500-1½)	GP 3.00° TCH 50	
Ⓢ CIRCLING	1820-1 531 (600-1)	1920-1¾ 631 (700-1¾)	1980-2¼ 691 (700-2¼)		

