


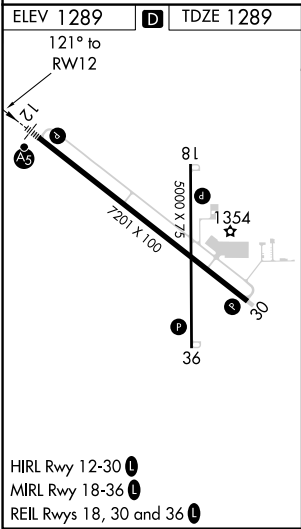
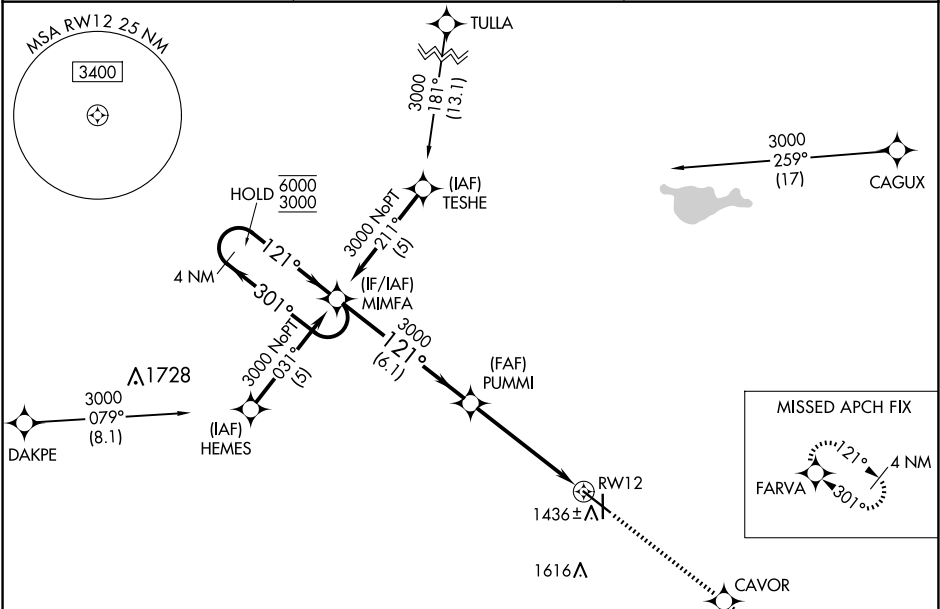
WAAS CH <b>70314</b> <b>W12A</b>	APP CRS <b>121°</b>	Rwy Idg TDZE <b>1289</b> Apt Elev <b>1289</b>
--	------------------------	---

RNAV (GPS) RWY 12

HURON RGNL (HON)

RNP APCH.	MALSR 	MISSED APPROACH: Climb to 3000 direct CAVOR and on track 121° to FARVA and hold.
⚠ Circling Rwy 18, 36 NA at night. For uncompensated Baro-VNAV systems, LNAV/VNAV NA below -17°C or above 54°C. For inop ALS, increase LNAV/VNAV all CATs visibility to 1½ SM and LNAV Cat C/D to 1¾ SM.		

ASOS <b>118.125</b>	MINNEAPOLIS CENTER <b>126.25 339.8</b>	UNICOM <b>123.0 (CTAF) 0</b>
------------------------	---	---------------------------------



ELEV 1289	D	TDZE 1289
121° to RWY 12		
GP 3.00° TCH 50		
6.1 NM		
3.7 NM		
1.4 NM		
RWY 12		
FARVA		
*1.4 NM to RWY 12		
*LNAV only		
CATEGORY		
A		
B		
C		
D		
LPV DA		
1489-½ 200 (200-½)		
LNAV/VNAV DA		
1699-¾ 410 (500-¾)		
LNAV MDA		
1780-½ 491 (500-½)		
1780-1 491 (500-1)		
CIRCLING		
1820-1 531 (600-1)		
1920-1¾ 631 (700-1¾)		
1980-2¼ 691 (700-2¼)		

NC-1, 10 JUL 2025 to 07 AUG 2025

NC-1, 10 JUL 2025 to 07 AUG 2025