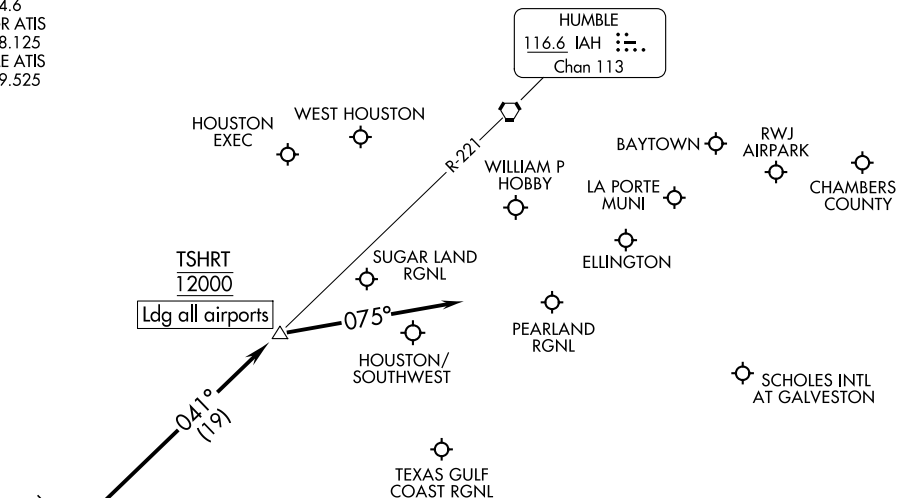


## TSHRT TWO ARRIVAL

## Arrival Routes

HOUSTON, TEXAS

HOUSTON APP CON  
119.175 291.675  
EFD ATIS  
135.575 269.9  
HOU D-ATIS  
124.6  
SGR ATIS  
118.125  
TME ATIS  
119.525



NOTE: RADAR required.

NOTE: DME/DME/IRU or GPS equipped turbojet and turboprop aircraft landing HOU must file the BELLR (RNAV) STAR.

NOTE: DME required.

NOTE: Chart not to scale.

## ARRIVAL ROUTE DESCRIPTION

... from over BELLR on IAH R-221 to cross TSHRT at 12000. From TSHRT fly heading 075° for vectors to final approach course.

## TSHRT TWO ARRIVAL

## Arrival Routes

HOUSTON, TEXAS

(BELLR.TSHRT2) 03NOV22

SC-5, 10 JUL 2025 to 07 AUG 2025

SC-5, 10 JUL 2025 to 07 AUG 2025