

## TSHRT TWO ARRIVAL

## Transition Routes

HOUSTON, TEXAS

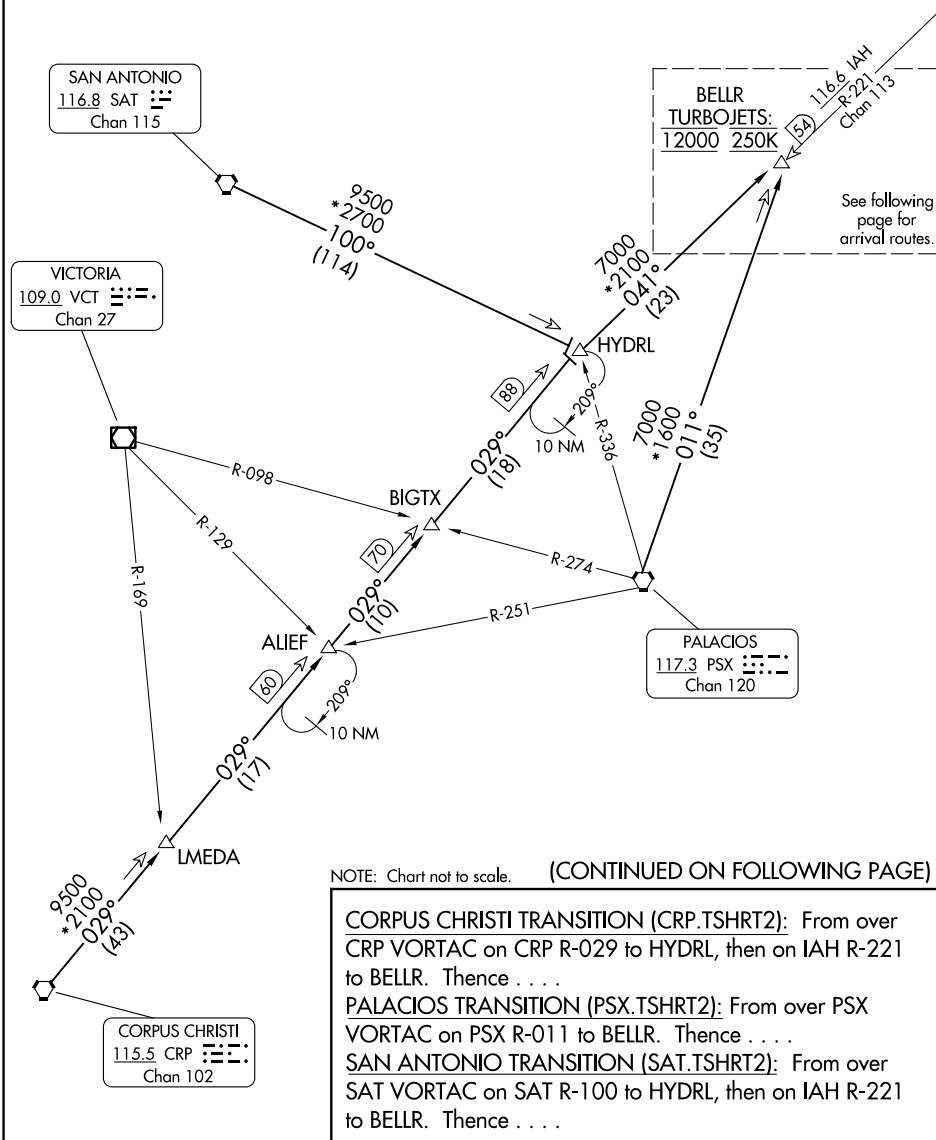
HOUSTON APP CON  
119.175 291.675  
EFD ATIS  
135.575 269.9  
HOU D-ATIS  
124.6  
SGR ATIS  
118.125  
TME ATIS  
119.525

NOTE: RADAR required.

NOTE: DME/DME/IRU or GPS equipped turbojet and turboprop aircraft landing HOU must file the BELLR (RNAV) STAR.

NOTE: DME required.

NOTE: DME required for holding at HYDRL.



NOTE: Chart not to scale.

(CONTINUED ON FOLLOWING PAGE)

CORPUS CHRISTI TRANSITION (CRP.TSHRT2): From over CRP VORTAC on CRP R-029 to HYDRL, then on IAH R-221 to BELLR. Thence . . . .

PALACIOS TRANSITION (PSX.TSHRT2): From over PSX  
VORTAC on PSX R-011 to BELLR. Thence . . . .

SAN ANTONIO TRANSITION (SAT.TSHRT2): From over SAT VORTAC on SAT R-100 to HYDRL, then on IAH R-221 to BELL. Thence . . . .

## TSHRT TWO ARRIVAL

### Transition Routes

HOUSTON, TEXAS

(BELLR.TSHRT2) 03NOV22

SC-5, 10 JUL 2025 to 07 AUG 2025