

WILLIAM P HOBBY (HOU)
HOUSTON, TEXAS

STRYA EIGHT DEPARTURE (RNAV)

D-ATIS
124.6
CLNC DEL
125.45
CPDLC
GND CON
121.9
HOBBY TOWER
118.7 256.9
HOUSTON DEP CON
132.25 285.425

TOP ALTITUDE:
16000

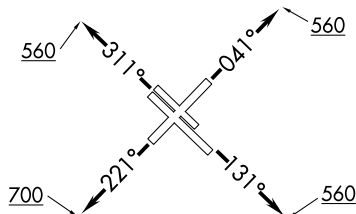
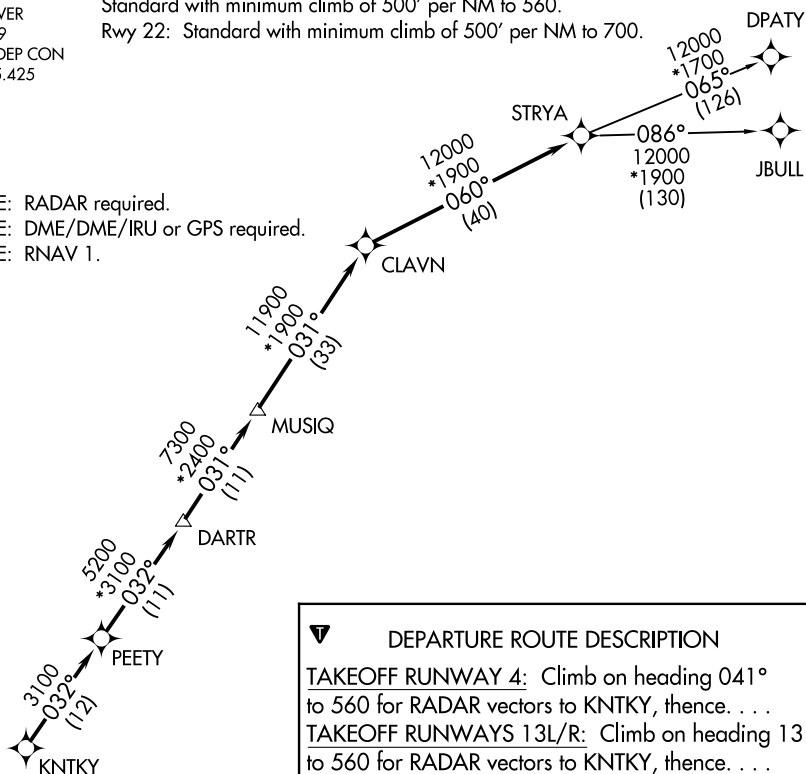
TAKEOFF MINIMUMS

Rwys 4, 13L/R, 31L/R:

Standard with minimum climb of 500' per NM to 560.

Rwy 22: Standard with minimum climb of 500' per NM to 700.

NOTE: RADAR required.
NOTE: DME/DME/IRU or GPS required.
NOTE: RNAV 1.



NOTE: Chart not to scale.

DEPARTURE ROUTE DESCRIPTION

TAKEOFF RUNWAY 4: Climb on heading 041°

to 560 for RADAR vectors to KNTKY, thence. . . .

TAKEOFF RUNWAYS 13L/R: Climb on heading

to 560 for RADAR vectors to KNTKY, thence. . .

TAKEOFF RUNWAY 22: Climb on heading 221°

to 700 for RADAR vectors to KNTKY, thence. . . .

TAKEOFF RUNWAYS 31L/R: Climb on heading 311°

to 560 for RADAR vectors to KNTKY, thence. . . .

...on track 032° to PEETY, then on track 032° to DARTR, then on track 031° to MUSIQ, then on track 031° to CLAVN, then on track 060° to STRYA, then on (transition). Maintain 16000 or as assigned by ATC. Expect filed altitude 10 minutes after departure.

DPATY TRANSITION (STRYA8.DPATY)

JBULL TRANSITION (STRYA8.JBULL)

STRYA EIGHT DEPARTURE (RNAV)

(STRYA8.STRYA) 07OCT21

HOUSTON, TEXAS
WILLIAM P HOBBY (HOU)

SC-5, 10 JUL 2025 to 07 AUG 2025