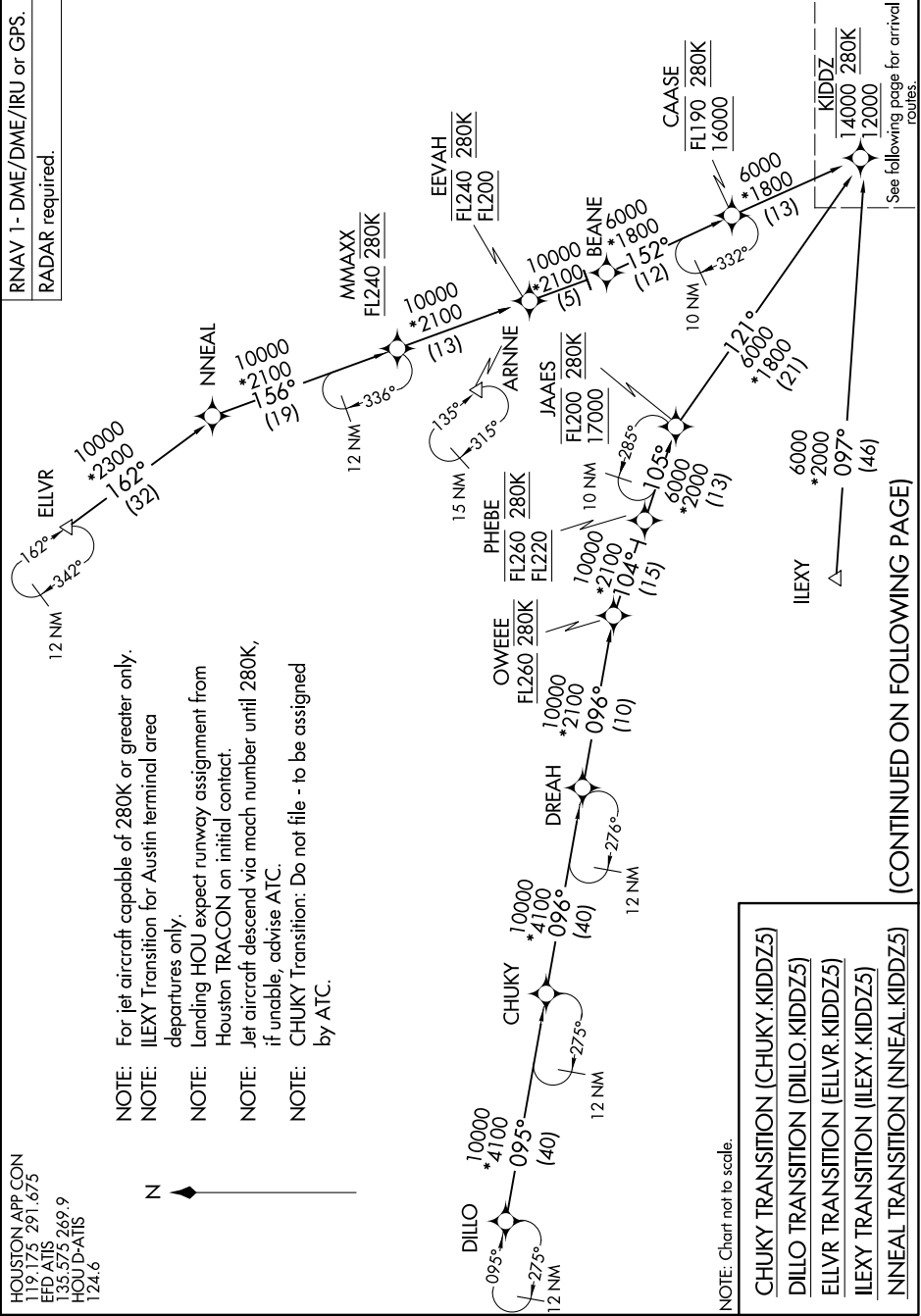


SC-5, 10 JUL 2025 to 07 AUG 2025

RNAV 1- DME/DME/IRU or GPS.
RADAR required.

HOUSTON APP CON
119.175 291.675
EFD-ATIS
135.575 269.9
HOU D-ATIS
124.6

- NOTE: For jet aircraft capable of 280K or greater only.
- NOTE: ILEXY Transition for Austin terminal area departures only.
- NOTE: Landing HOU expect runway assignment from Houston TRACON on initial contact.
- NOTE: Jet aircraft descend via mach number until 280K, if unable, advise ATC.
- NOTE: CHUKY Transition: Do not file - to be assigned by ATC.



(CONTINUED ON FOLLOWING PAGE)

SC-5, 10 JUL 2025 to 07 AUG 2025