

WAAS CH <b>97629</b> <b>W35A</b>	APP CRS <b>354°</b>	Rwy Idg <b>9001</b> TDZE <b>28</b> Apt Elev <b>33</b>
--	------------------------	---

RNAV (GPS) RWY 35L  
ELLINGTON (EFD)

**T** For uncompensated Baro-VNAV systems, LNAV/VNAV NA below -15°C (5°F) or above 43°C (109°F). Circling NA west of Rwy 17R-35L. DME/DME RNP-0.3 NA.

**A** For inop MALSF, increase LNAV/VNAV all Cats visibility to 1½ mile, and LNAV Cats A and B visibility to 1 mile and Cats C, D and E visibility to 1½ mile. Inop table does not apply to LPV.

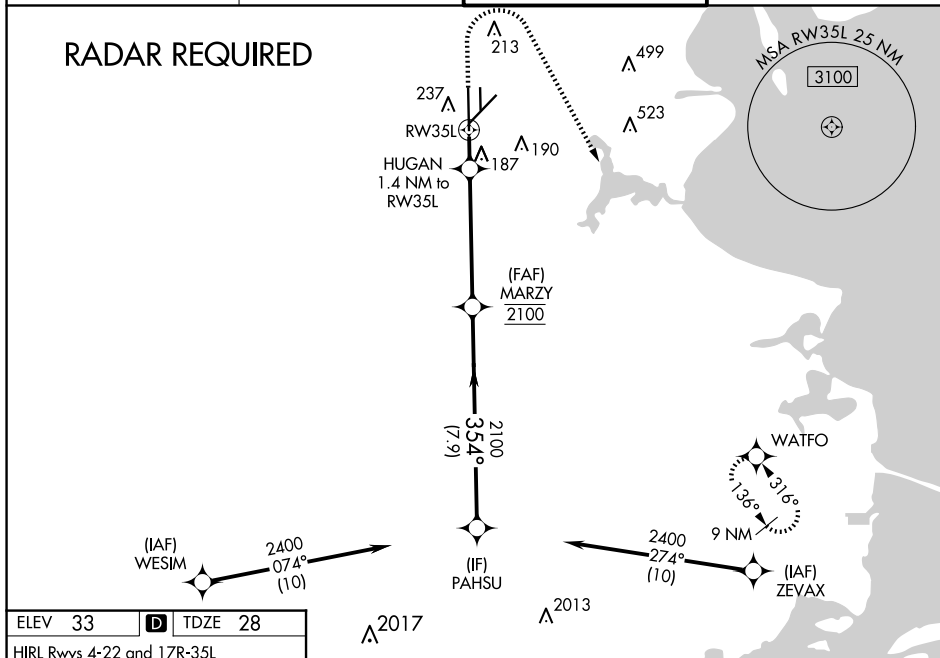
MALSF



**MISSED APPROACH:**  
Climb to 1500 then  
climbing right turn to  
3100 direct WATFO  
and hold.

ATIS 135.575 269.9	HOUSTON APP CON 134.45 284.0	ELLINGTON TOWER 126.05 253.5	GND CON 121.6 275.8
-----------------------	---------------------------------	---------------------------------	------------------------

## RADAR REQUIRED



**PAHSU**

**2400**

**35°**

**HUGAN**  
1.4 NM to RW35L

**MARZY**  
2100

**RW35L**

**GP 3.00° TCH 54'**

CATEGORY	A	B	C	D	E
LPV DA		228/40	200 (200-¾)		
LNAV/VNAV DA		499/60	471 (500-1¼)		
LNAV MDA	440/40	412 (500-¾)	440/50	412 (500-1)	
<b>C</b> CIRCLING	500-1	468 (500-1)	580-1½ 547 (600-1½)	640-2 607 (700-2)	700-2¼ 667 (700-2½)