



HOUSTON, TEXAS

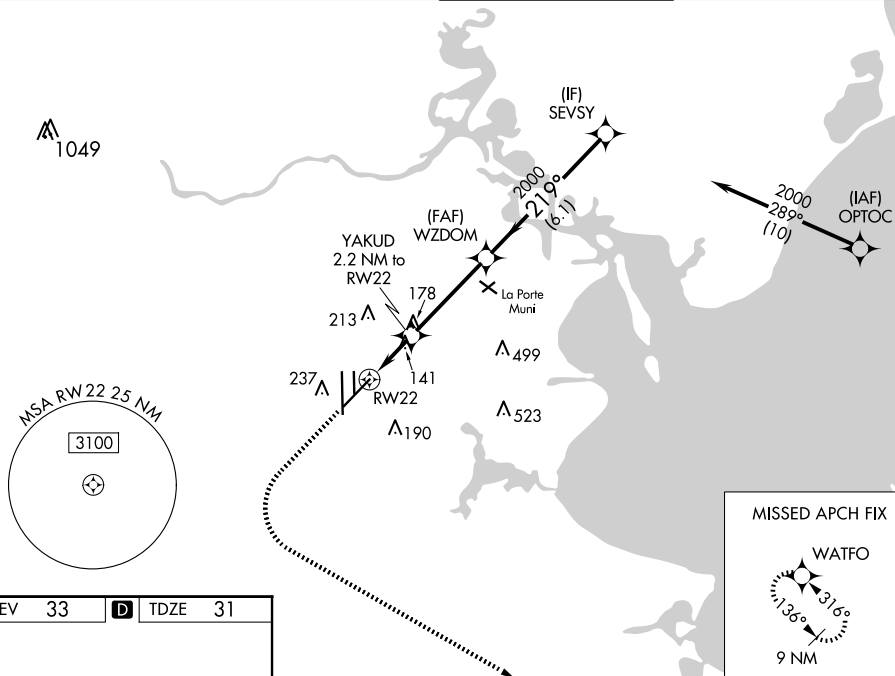
AL-197 (FAA)

24137

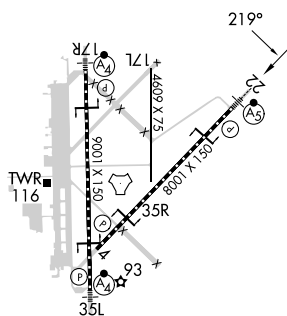
WAAS CH <b>61111</b> <b>W22A</b>	APP CRS <b>219°</b>	Rwy Idg <b>8001</b> TDZE <b>31</b> Apt Elev <b>33</b>
--	------------------------	---

RNAV (GPS) RWY 22  
ELLINGTON (EFD)

RNP APCH.		 MALSR	MISSED APPROACH: Climb to 500 then climbing left turn to 3100 direct WATFO and hold.
 Circling NA west of Rwy 17R - 35L. For uncompensated Baro-VNAV systems, LNAV/VNAV NA below -15°C or above 54°C. For inop ALS, increase LPV Cat E visibility to RVR 4000, LNAV/VNAV all Cats visibility to RVR 4500, and LNAV Cats C/D/E visibility to RVR 5500.			
ATIS <b>135.575 269.9</b>	HOUSTON APP CON <b>134.45 284.0</b>	ELLINGTON TOWER <b>126.05 253.5</b>	GND CON <b>121.6 275.8</b>



ELEV	33	<b>D</b>	TDZE	31
------	----	----------	------	----



HIRL Rwy 4-22 and 17R-35L  
TDZ/CL Rwy 17R, 22 and 35L

VGS1 and RNAV glidepath not coincident (VGS1 Angle 3.00/TCH 50).

WZDOM SEVSY

\*LNAV only.

YAKUD 2.2 NM to RW22

2000 2000

780\* 2000

GP 3.00° TCH 54

1 NM 1.2 NM 3.8 NM 6.1 NM

219°

CATEGORY	A	B	C	D	E
LPV DA	231/18 200 (200-½)				
LNAV/VNAV DA	341/24 310 (400-½)				
LNAV MDA	400/24	369 (400-½)	400/35 369 (400-⅝)		
<b>C</b> CIRCLING	500-1	467 (500-1)	580-1½ 547 (600-1½)	640-2 607 (700-2)	700-2¼ 667 (700-2¼)

HOUSTON, TEXAS  
Amdt 2D 15AUG19

29°36'N-95°10'W

ELLINGTON (EFD)  
RNAV (GPS) RWY 22

SC-5, 10 JUL 2025 to 07 AUG 2025

SC-5, 10 JUL 2025 to 07 AUG 2025