

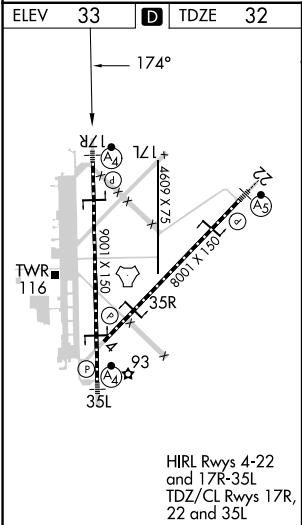
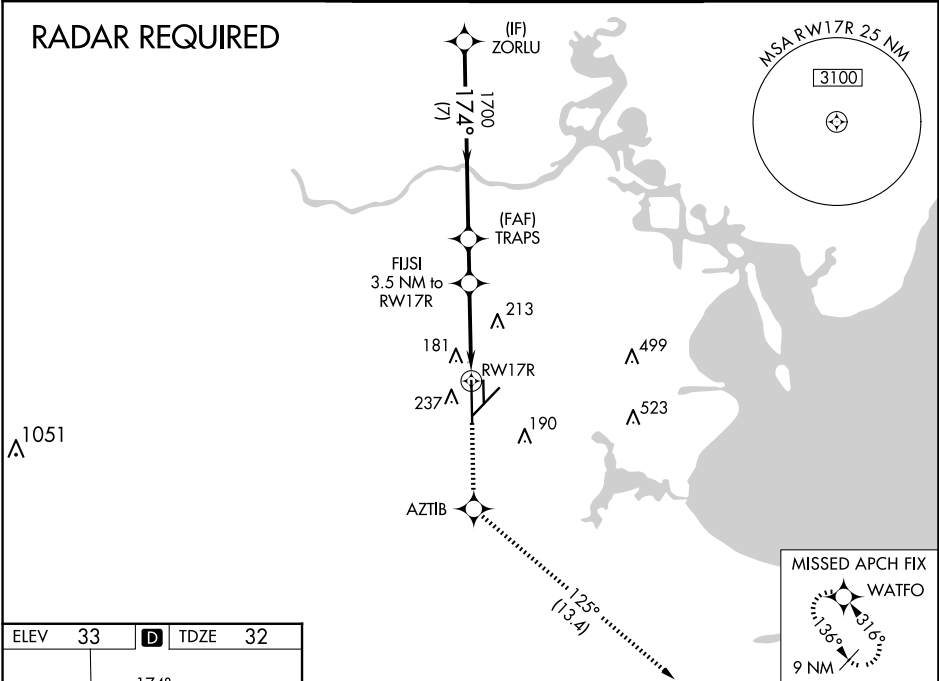
WAAS CH 70625 W17A	APP CRS 174°	Rwy Idg 9001 TDZE 32 Apt Elev 33
--	------------------------	---

RNAV (GPS) RWY 17R
ELLINGTON (EFD)

<div><div></div><div>For uncompensated Baro-VNAV systems, LNAV/VNAV NA below -15°C (5°F) or above 43°C (109°F). DME/DME RNP-0.3 NA. Inop table does not apply to LPV DA. For inop MALSF, increase LNAV/VNAV all Cats and LNAV Cats A and B visibility to RVR 5500 and Cats C/D/E visibility to 1½ miles. Circling NA west of Rwy 17R-35L.</div></div>	<div><div>MALSF</div><div><div></div><div></div></div></div>	<div>MISSED APPROACH: Climb to 3100 direct AZTIB and on track 125° to WATFO and hold.</div>
---	--	---

ATIS 135.575 269.9	HOUSTON APP CON 134.45 284.0	ELLINGTON TOWER 126.05 253.5	GND CON 121.6 275.8
------------------------------	--	--	-------------------------------

RADAR REQUIRED



VGSI and RNAV glidepath not coincident (VGSI Angle 3.00/TCH 48).		3100	AZTIB	fr 125°	WATFO
ZORLU		2000	TRAPS	FUJSI	
GP 3.00° TCH 52		1700	3.5 NM to RWY 17R	*1.4 NM to RWY 17R	
		*1180			
		7 NM	1.6 NM	2.2 NM	1.4 NM
CATEGORY	A	B	C	D	E
LPV DA	232/40		200 (200-¾)		
LNAV/VNAV DA	363/40		331 (400-¾)		
LNAV MDA	500/40	468 (500-¾)	500/60 468 (500-1¼)		
<div><div></div><div>CIRCLING</div></div>	500-1	467 (500-1)	580-1½ 547 (600-1½)	640-2 607 (700-2)	700-2¼ 667 (700-2¼)