

PALACIOS THREE DEPARTURE

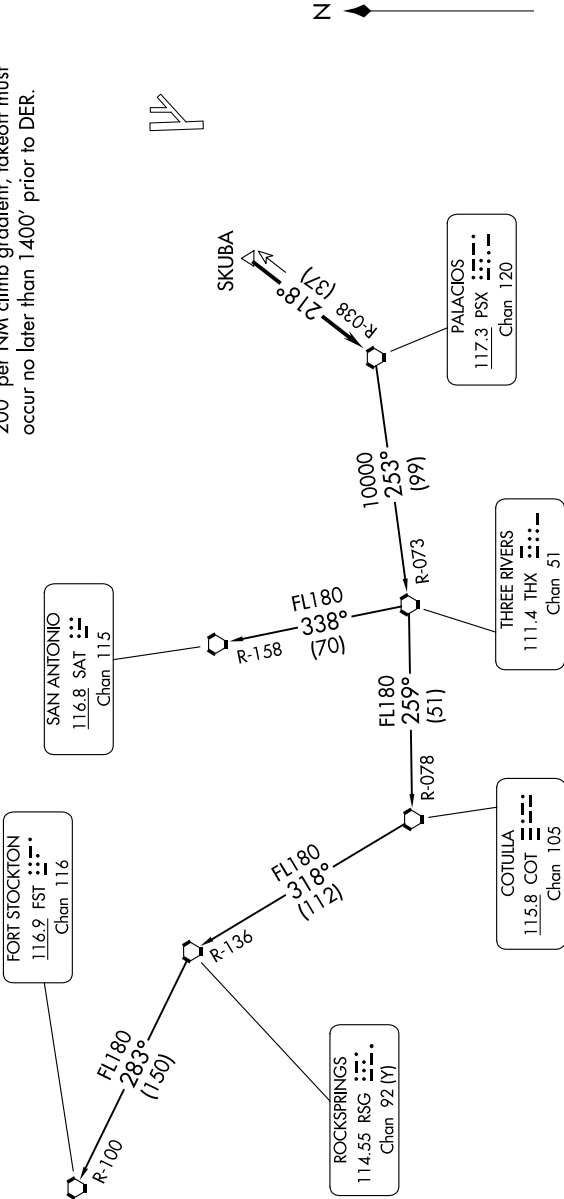
SC-5, 10 JUL 2025 to 07 AUG 2025

TOP ALTITUDE:
ASSIGNED BY ATC

RADAR and DME required.

ATIS
135.575 269.9
GND CON
121.6 275.8
ELLINGTON TOWER
126.05 253.5
HOUSTON DEP CON
134.45 284.0

TAKEOFF MINIMUMS
Rwys 4, 17L/R, 35L/R: Standard.
Rwy 22: 200-1¼ or standard with minimum climb
of 214' per NM to 300 or alternatively with
standard takeoff minimums and a normal
200' per NM climb gradient, takeoff must
occur no later than 1400' prior to DER.



(CONTINUED ON FOLLOWING PAGE)

SC-5, 10 JUL 2025 to 07 AUG 2025

NOTE: Chart not to scale.

PALACIOS THREE DEPARTURE