

| | | |
|---------------------------|------------------------|--|
| LOC I-EFD 111.1 | APP CRS 354° | Rwy Idg TDZE Apt Elev 9001 28 33 |
|---------------------------|------------------------|--|

ILS Z or LOC Z RWY 35L
ELLINGTON (EFD)

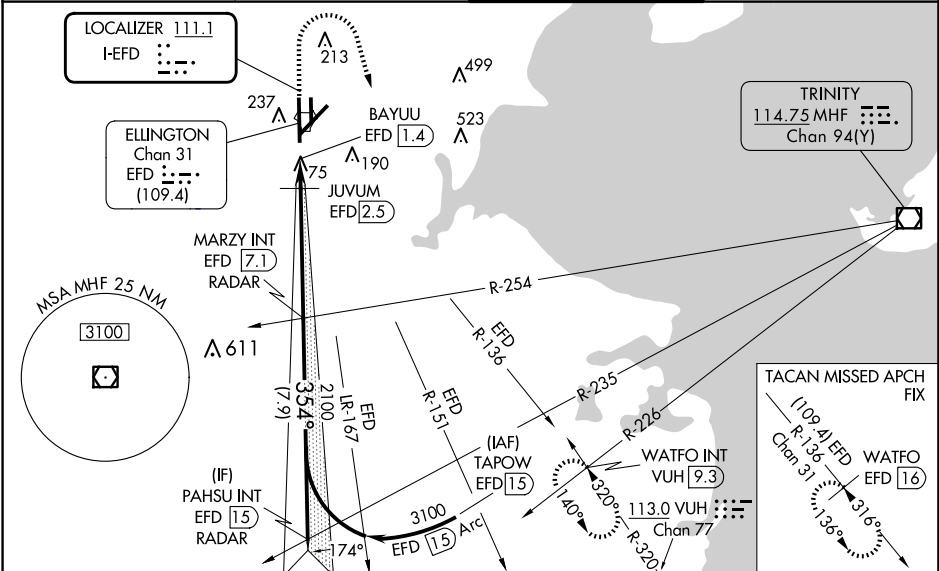
RADAR required for procedure entry.

⚠ Circling NA west of Rwy 17R-35L. DME from EFD TACAN. Simultaneous reception of I-EFD and EFD DME required. Inop table does not apply to S-ILS 35L. For inop ALS, increase S-LOC 35L Cat C/D/E visibility to 1½ SM. For inop ALS when using JUVUM fix minimums, increase S-LOC 35L Cat C/D/E visibility to RVR 6000.

MALSF

⚠ MISSED APPROACH: Climb to 700 then climbing right turn to 3100 on VUH VOR/DME R-320 to WATFO INT/VUH 9.3 DME and hold. (TACAN aircraft climb to 700 then climbing right turn to 3100 on EFD TACAN R-136 to WATFO/EFD 16 DME and hold southeast, left turn, 316° inbound).

| | | | |
|------------------------------|--|--|-------------------------------|
| ATIS 135.575 269.9 | HOUSTON APP CON 134.45 284.0 | ELLINGTON TOWER 126.05 253.5 | GND CON 121.6 275.8 |
|------------------------------|--|--|-------------------------------|



| | | | | | | |
|--|------------------|---|------|---------------|---|------------------|
| ELEV 33 | D TDZE 28 | 700 | 3100 | WATFO INT | VGSI and ILS glidepath not coincident (VGSI Angle 3.00/TCH 32). | PAHSU INT EFD 15 |
| HIRL Rwy 4-22 and 17R-35L TDZ/CL Rwy 17R, 22 and 35L | | *LOC only. | | JUVUM EFD 2.5 | | |
| | | | | | | |
| FAF to MAP 5.7 NM | | 0.6 NM 1.1 NM 4.6 NM 7.9 NM | | | | |
| Knots 60 90 120 150 180 | | CATEGORY A B C D E | | | | |
| Min:Sec 5:42 3:48 2:51 2:17 1:54 | | S-ILS 35L 228/40 200 (200-¾) | | | | |
| | | S-LOC 35L 620/40 592 (600-¾) 620-1⅓ 592 (600-1⅓) | | | | |
| | | C CIRCLING 620-1 587 (600-1) 620-1¾ 587 (600-1¾) 640-2 607 (700-2) 700-2¼ 667 (700-2¼) | | | | |
| | | JUVUM FIX MINIMUMS (DME REQUIRED) | | | | |
| | | S-LOC 35L 440/40 412 (500-¾) 440/50 412 (500-1) | | | | |
| | | C CIRCLING 500-1 467 (500-1) 580-1½ 547 (600-1½) 640-2 607 (700-2) 700-2¼ 667 (700-2¼) | | | | |

SC-5, 10 JUL 2025 to 07 AUG 2025

SC-5, 10 JUL 2025 to 07 AUG 2025