

LOC I-LPV <u>110.3</u>	APP CRS 174°	Rwy Idg 9001 TDZE 32 Apt Elev 33
----------------------------------	------------------------	---

ILS Z or LOC Z RWY 17R
ELLINGTON (EFD)

DME required. RADAR required for procedure entry.

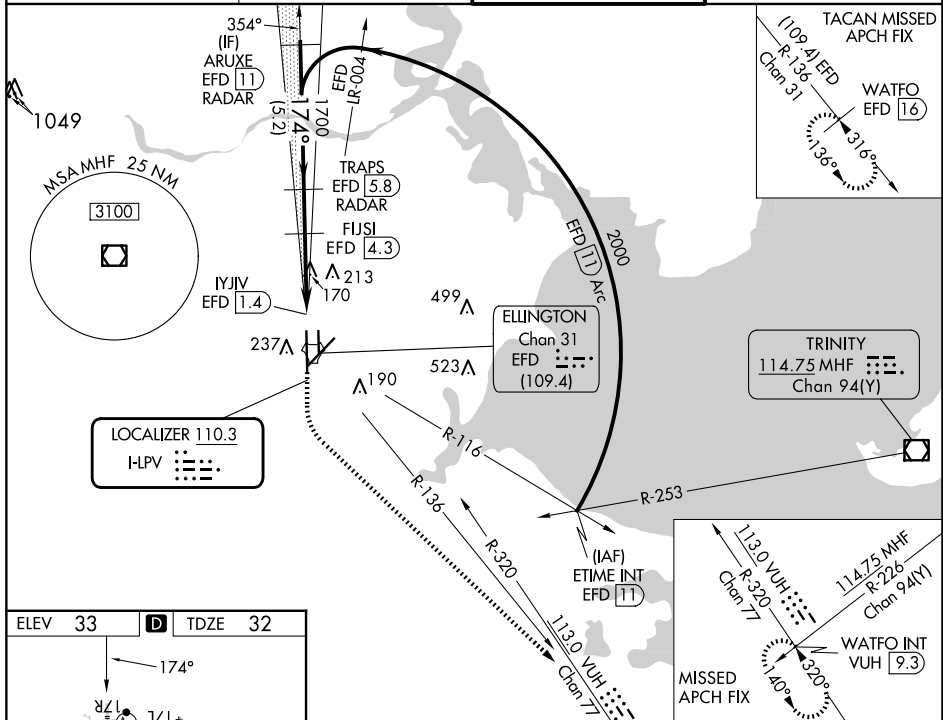
- V** Circling NA west of Rwy 17R-35L. DME from EFD TACAN.
A Simultaneous reception of I-LPV and EFD DME required.
 Inop table does not apply to S-ILS 17R. For inop ALS,
 increase S-LOC 17R Cats C/D/E visibility to $1\frac{3}{8}$ SM.

MALSF

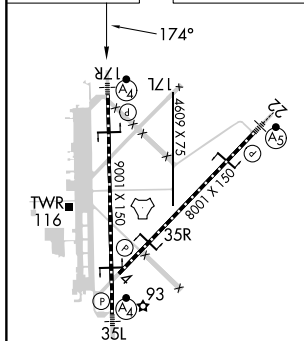


MISSED APPROACH: Climb to 700 then climbing left turn to 3100 on VUH VOR/DME R-320 to WATFO INT/VUH 9.3 DME and hold (TACAN aircraft climb to 700 then climbing left turn to 3100 on EFD TACAN R-136 to WATFO INT/EFD 16 DME and hold southeast, left turn, 316° inbound).

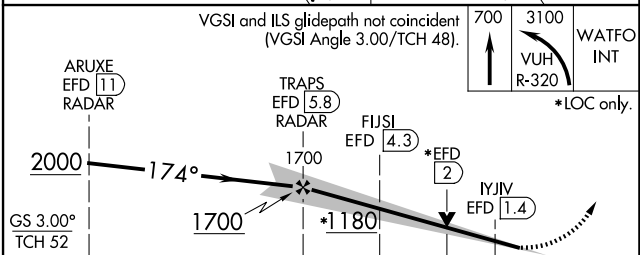
ATIS 135.575 269.9	HOUSTON APP CON 134.45 284.0	ELLINGTON TOWER 126.05 253.5	GND CON 121.6 275.8
-----------------------	---------------------------------	---------------------------------	------------------------



ELEV 33	D	TDZE 32
---------	----------	---------



VGSI and ILS glidepath not coincident
(VGSI Angle 3.00/TCH 48).



	5.2 NM		1.5 NM		2.4		0.7		0.6	
CATEGORY	A		B		C		D		E	
S-ILS 17R	232/40 200 (200-¾)									
S-LOC 17R	480/40 448 (500-¾)		480/55 448 (500-1)							
CIRCLING	500-1 467 (500-1)		580-1½ 547 (600-1½)		640-2 607 (700-2)		700-2¼ 667 (700-2¼)			