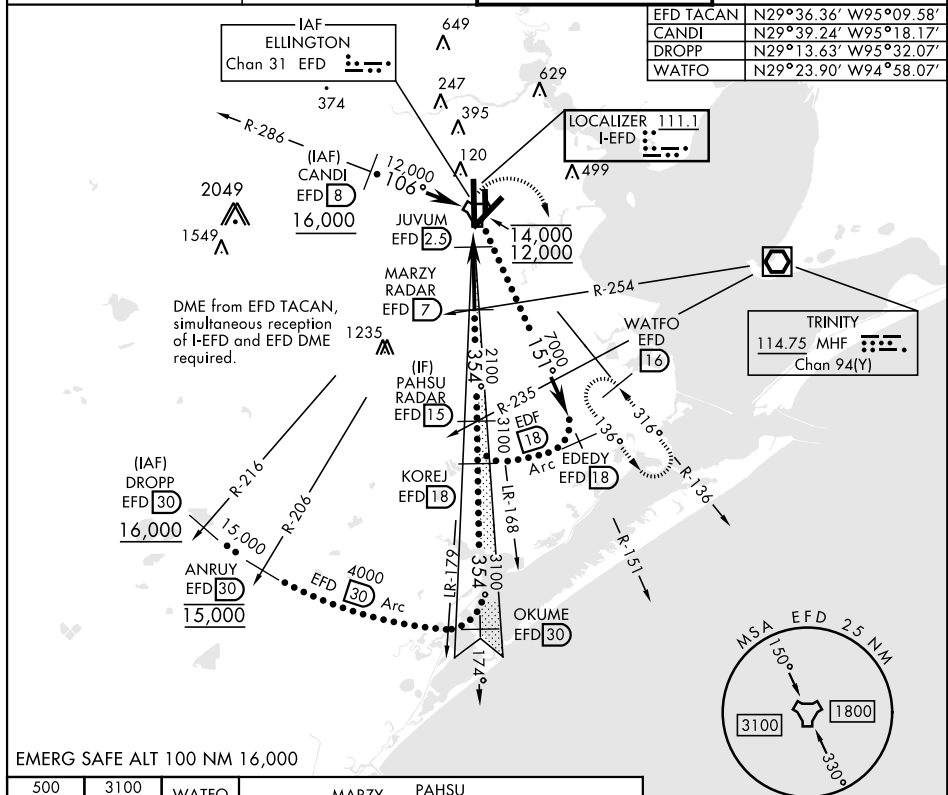


HI-ILS Y or LOC Y RWY 35L

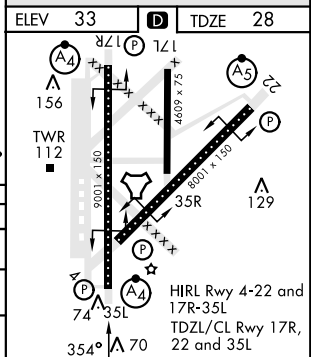
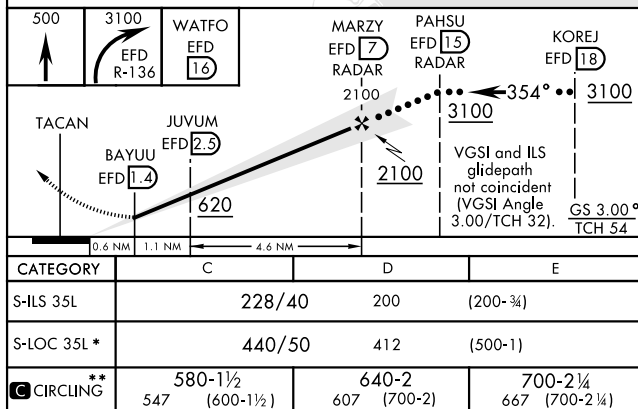
LOC I-EFD <b>111.1</b>	APCH CRS <b>354°</b>	Rwy Idg <b>9001</b> TDZE <b>28</b> Arpt Elev <b>33</b>	[USAF]	ELLINGTON (KEFD)
DME required. RADAR required for procedure entry.			MALSF	MISSED APPROACH: Climb to 500 then climbing right turn to 3100 via EFD TACAN R-136 to WATFOR/EFD 16 DME and hold.
<div> <div>▼</div> <div>           * When ALS in op, increase CAT CDE RVR to 60.            ** Circling not authorized W of rwy 17L-35R         </div> </div>			<div> <div>A4</div> <div> </div> </div>	

ATIS <b>135.575 269.9</b>	HOUSTON APP CON <b>134.45 284.0</b>	TOWER <b>126.05 253.5</b>	GND CON <b>121.6 275.8</b>
------------------------------	--	------------------------------	-------------------------------

EFD TACAN	N29°36.36' W95°09.58'
CANDI	N29°39.24' W95°18.17'
DROPP	N29°13.63' W95°32.07'
WATFO	N29°23.90' W94°58.07'



EMERG SAFE ALT 100 NM 16,000



HI-ILS Y or LOC Y RWY 35L