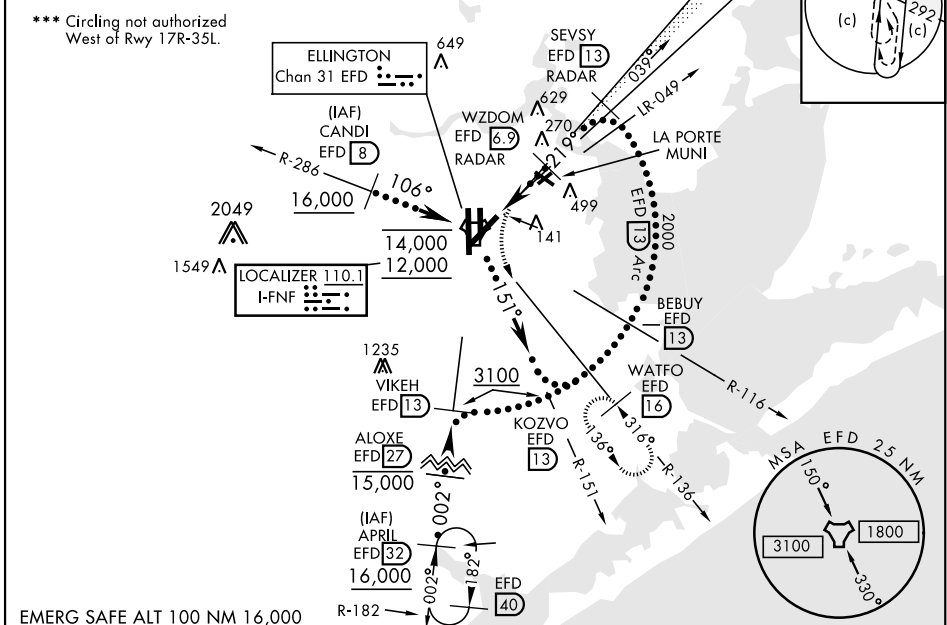


LOC I-FNF 110.1	APCH CRS 219°	Rwy Idg TDZE Arpt Elev 8001 31 33	AL-197 [USAF]	ELLINGTON (KEFD)
DME required. RADAR required for procedure entry.			MALSR	MISSED APPROACH: Climb to 700 then climbing left turn to 3100 on EFD TACAN R-136 to WATFO/EFD16 DME and hold.
*When ALS inop, increase CAT E RVR to 40. **When ALS inop, increase CAT E vis to 1½ mile.				

ATIS 135.575 269.9	HOUSTON APP CON 134.45 284.0	TOWER 126.05 253.5	GND CON 121.6 275.8
------------------------------	--	------------------------------	-------------------------------

EFD TACAN	N29°36.36' W95°09.58'
CANDI	N29°39.24' W95°18.17'
APRIL	N29°04.53' W95°14.05'
WATFO	N29°23.90' W94°58.07'



700 ↑		3100 EFD R-136		WATFO EFD 16		KOZVO R-151 13		BEBUY R-116 13		ELEV 33		D		TDZE 31					
VGSI and ILS GP not coincident (VGSI angle 3.00/TCH 50). DME from EFD TACAN. Simultaneous reception of I-FNF and EDF DME REQUIRED.																			
TACAN GS 3.00° TCH 54												WZDOM RADAR 2000				SEVSY 13 RADAR Intcp Lczt 2000			
219°												2000				2000			
6 NM																			
CATEGORY		C		D		E													
S-ILS 22 *		231/24		200		(200-½)													
S-LOC 22 **		560/55		529		(600-1)													
*** C CIRCLING		580-1½ 547 (600-1½)		640-2 607 (700-2)		700-2¼ 667 (700-2¼)													

HIRL Rwy 4-22 and 17R-35L
TDZL/CL Rwy 17R, 22 and 35L