

WAAS CH 66046 W23A	APP CRS 229°	Rwy Idg TDZE 489 Apt Elev 489	5015
--	------------------------	---	-------------

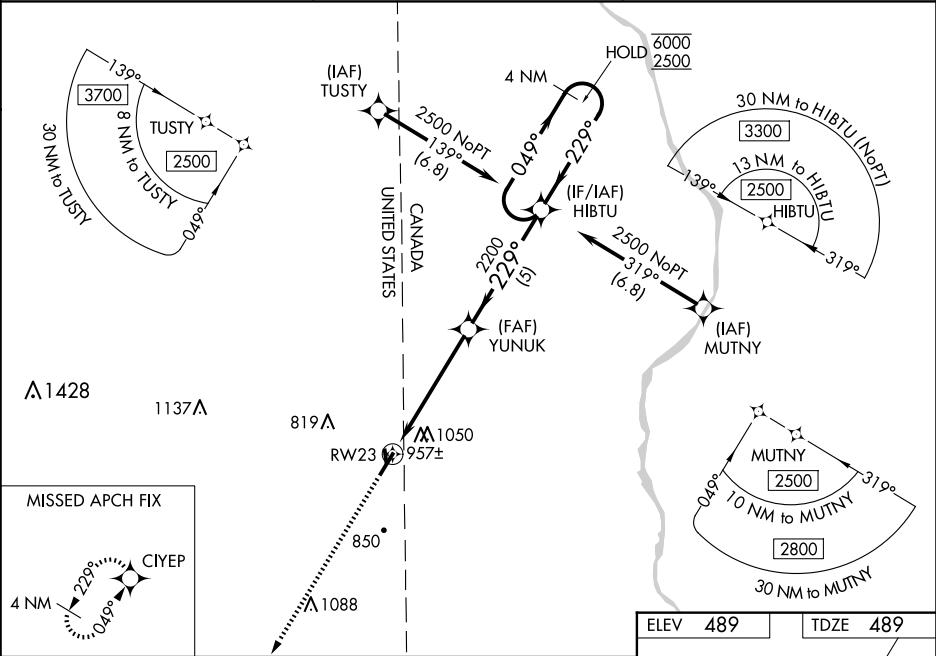
RNAV (GPS) RWY 23
HOULTON INTL (HUL)

RNP APCH - GPS.

For uncompensated Baro-VNAV systems, LNAV/VNAV NA below -20°C or above 54°C. Rwy 23 helicopter visibility reduction below ¾ SM NA. Circling Rwy 1, 19 NA at night. Circling NA for Cat C east of Rwy 5-23. Baro-VNAV and VDP NA when using PQI altimeter setting. When local altimeter setting not received, use PQI altimeter setting and increase LPV DA to 882 feet and all visibilities ½ SM. Increase LNAV/VNAV DA to 1387 feet and all visibilities 1½ SM. Increase all MDAs 100 feet and LNAV visibility Cat B/C ½ SM, and Circling visibility Cat B/C ¼ SM.

MISSED APPROACH:
Climb to 3000 direct
CIYEP and hold.

ASOS 132.025	BOSTON CENTER 120.25 346.4	UNICOM 122.8 (CTAF) 1
------------------------	--------------------------------------	---------------------------------



3000	CIYEP	HIBTU	4 NM Holding Pattern
2.1 NM to RW23	2.1 NM to RW23	2.1 NM to RW23	2.1 NM to RW23
2.1 NM	3.1 NM	5 NM	
LPV DA	796-1	307 (400-1)	NA
LNAV/VNAV DA	1301-2½	812 (900-2½)	NA
LNAV MDA	1220-1	731 (800-1)	1220-2 731 (800-2)
CIRCLING	1320-1¼ 831 (900-1¼)	1400-1¼ 911 (1000-1¼)	1400-2¾ 911 (1000-2¾)

