

WAAS CH <b>48820</b> <b>W35A</b>	APP CRS <b>352°</b>	Rwy Idg TDZE Apt Elev <b>6002</b> <b>917</b> <b>930</b>
--	------------------------	--

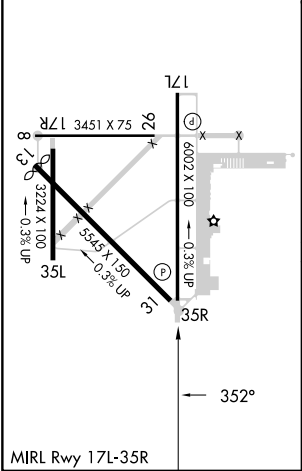
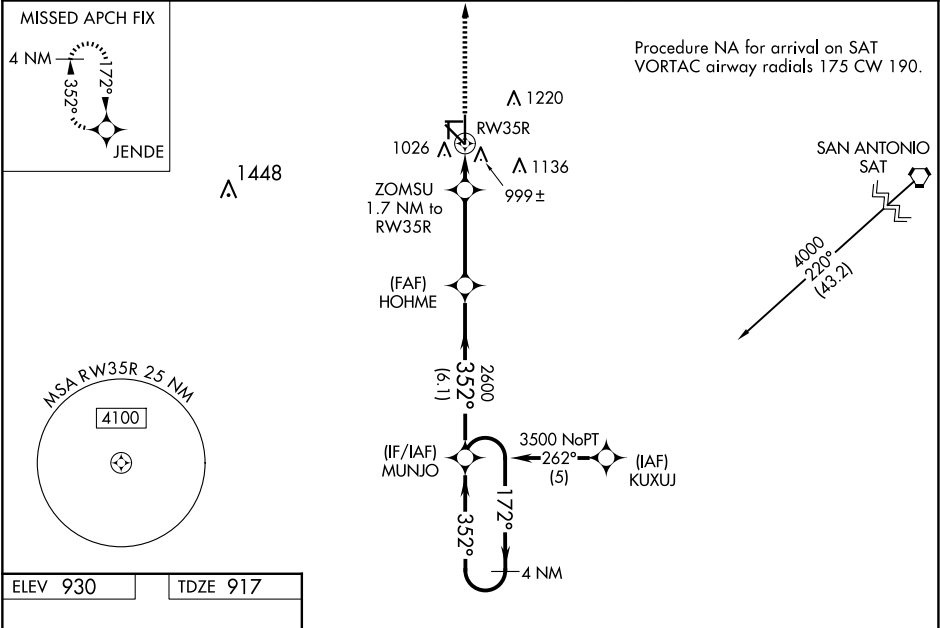
RNAV (GPS) RWY 35R  
SOUTH TEXAS RGNL AT HONDO (HDO)

RNP APCH.

▼ Baro-VNAV NA when using Castroville altimeter setting. For uncompensated Baro-VNAV systems, LNAV/VNAV NA below -16°C (4°F) or above 47°C (116°F). Visibility reduction by helicopters NA. When local altimeter setting not received, use Castroville altimeter setting and increase all DA 62 feet and all MDA 80 feet, increase LNAV/VNAV all Cats, and LNAV and Circling Cats C and D visibility ¼ mile. Circling Rwy 8, 13, 17R, 26, 31, 35L NA at night.

▲ MISSED APPROACH: Climb to 3700 direct JENDE and hold.

ASOS <b>119.675</b>	HOUSTON CENTER <b>134.95 269.4</b>	UNICOM <b>122.725</b> (CTAF)
------------------------	---------------------------------------	---------------------------------



3700

↑

JENDE

✦

4 NM Holding Pattern

MUNJO

\*LNAV only.

ZOMSU  
1.7 NM to RW35R

HOHME  
2600

172° → 3500

← 352°

GP 3.00°  
TCH 45

RW35R

\*1500

2600

352°

1.7

3.4 NM

6.1 NM

CATEGORY	A	B	C	D
LPV DA	1170-1 253 (300-1)			
LNAV/VNAV DA	1293-1¼ 376 (400-1¼)			
LNAV MDA	1360-1	443 (500-1)	1360-1¼ 443 (500-1¼)	1360-1½ 443 (500-1½)
CIRCLING	1440-1 510 (600-1)	1520-1 590 (600-1)	1580-1¾ 650 (700-1¾)	1580-2 650 (700-2)

SC-3, 10 JUL 2025 to 07 AUG 2025

SC-3, 10 JUL 2025 to 07 AUG 2025