

VORTAC HLN	APP CRS	Rwy Idg	N/A
117.7	270°	TDZE	N/A
Chan 124		Apt Elev	3877

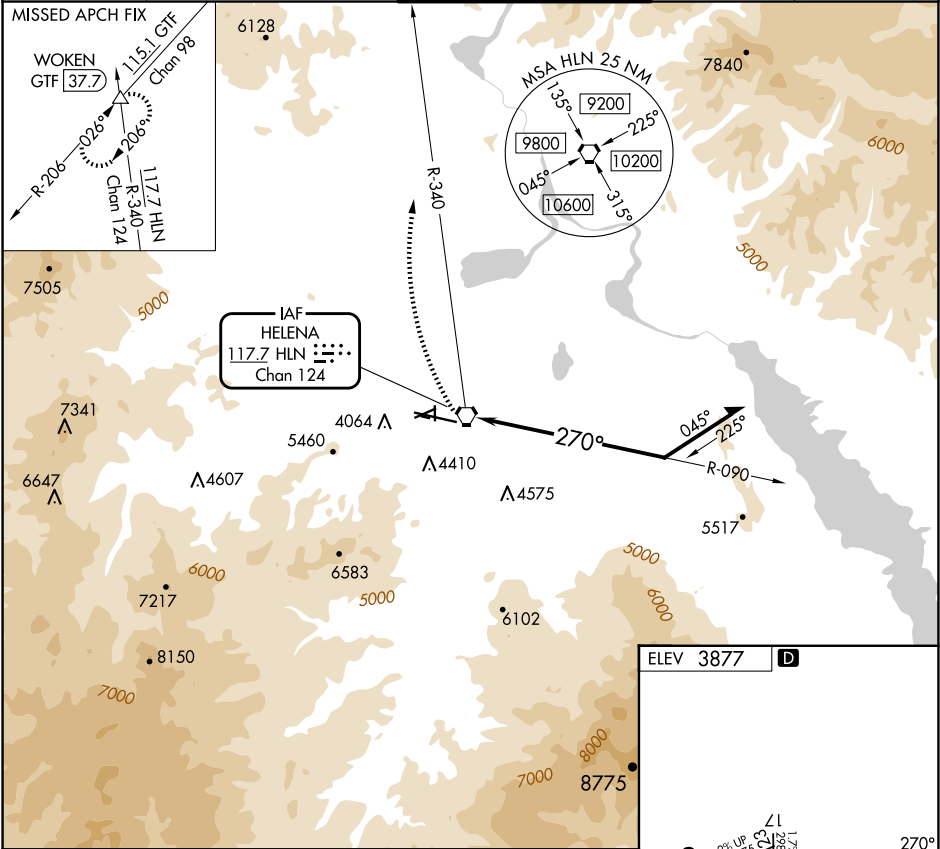
VOR-A
HELENA RGNL (HLN)

⚠ Circling NA to Rwys 10 and 28. Circling NA for Cat D south of Rwy 9-27. Circling Rwy 5, 23, 35 NA at night. Rwy 5, 23, 35 helicopter visibility reduction below 1 SM NA.

❄ -17°C

MISSED APPROACH: Climbing right turn to 9000 on HLN VORTAC R-340 to WOKEN INT/GTF 37.7 DME and hold.

ATIS 120.4	HELENA APP CON ★ 119.5 229.4	HELENA TOWER ★ 118.3 (CTAF) 257.8	GND CON 121.9	UNICOM 122.95
---------------	---------------------------------	--------------------------------------	------------------	------------------



9000 WOKEN

HLN R-340

HLN VORTAC

Remain within 10 NM

090°

270°

8700

CATEGORY	A	B	C	D
CIRCLING	7200-1¼ 3323 (3400-1¼)	7200-1½ 3323 (3400-1½)	7200-3	3323 (3400-3)

ELEV 3877

REIL Rwys 9, 17, and 35

MIRL Rwys 5-23 and 17-35

HIRL Rwy 9-27

The diagram shows the runway layout and approach paths for Helena, Montana. Key features include:

- Runways:** 9, 17, 23, 28, 35, and 39.
- Approach Paths:** Indicated by arrows and headings (e.g., 270°, 090°, 045°, 225°).
- Altitudes:** Various altitudes are marked, including 3951, 3984, 1584, 1700, 1750, 1775, 1780, 1785, 1790, 1795, 1800, 1805, 1810, 1815, 1820, 1825, 1830, 1835, 1840, 1845, 1850, 1855, 1860, 1865, 1870, 1875, 1880, 1885, 1890, 1895, 1900, 1905, 1910, 1915, 1920, 1925, 1930, 1935, 1940, 1945, 1950, 1955, 1960, 1965, 1970, 1975, 1980, 1985, 1990, 1995, 2000.