

APP CRS	Rwy Idg	9000
091°	TDZE	3864
	Apt Elev	3877

RNAV (GPS) Y RWY 9

HELENA RGNL (HLN)

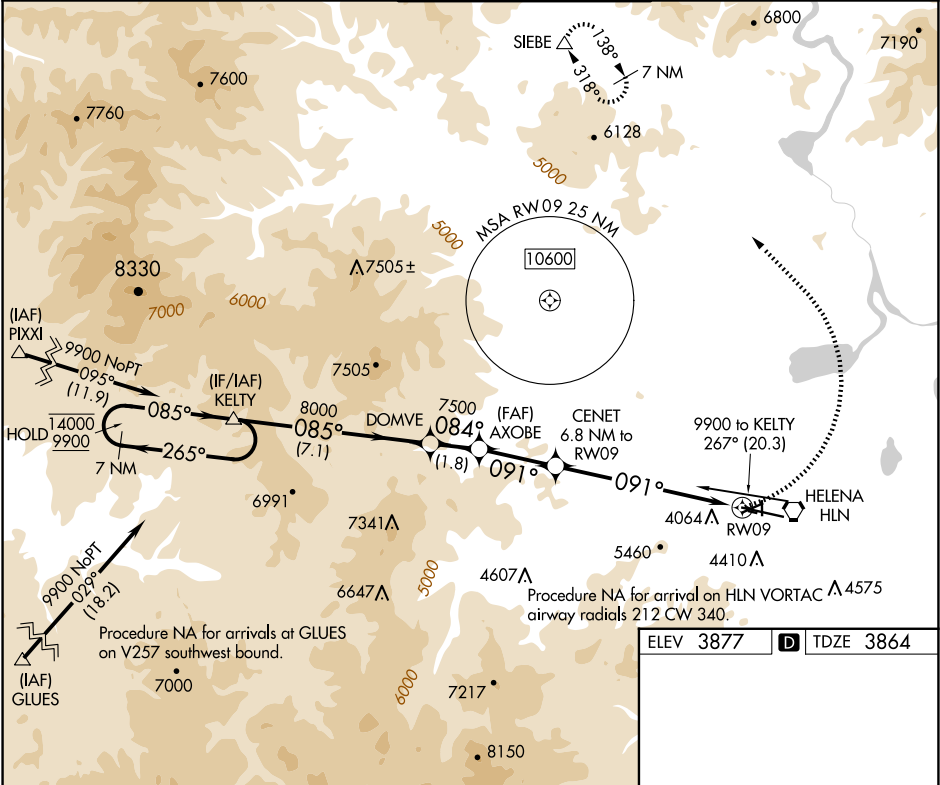
RNP APCH - GPS.

Circling NA to Rwy 10 and 28. Circling NA for Cat D south of Rwy 9-27. Circling Rwy 5, 23, 35, NA at night.

-17°C

MISSED APPROACH: Climbing left turn to 9300 direct SIEBE and hold, continue climb-in-hold to 9300.

ATIS 120.4	HELENA APP CON ★ 119.5 229.4	HELENA TOWER ★ 118.3 (CTAF) 0 257.8	GND CON 121.9	UNICOM 122.95
---------------	---------------------------------	--	------------------	------------------



7 NM Holding Pattern KELTY

VGSI and descent angles not coincident (VGSI Angle 3.30/TCH 55).

14000 ← 265° 9900 085° 085° 8000 084° 7500 091° 6460 3.50° TCH 55 3.8 NM to RW09 3.1 NM 3.8 NM

CATEGORY	A	B	C	D
LNNAV MDA	5220-1¼ 1356 (1400-1¼)	5220-1½ 1356 (1400-1½)	5220-3 1356 (1400-3)	
CIRCLING	5220-1¼ 1343 (1400-1¼)	5220-1½ 1343 (1400-1½)	6000-3 2123 (2200-3)	

ELEV 3877 TDZE 3864

REIL Rwy 5, 17, and 35 1
MIRL Rwy 5-23 and 17-35 1
HIRL Rwy 9-27 1

NW-1, 10 JUL 2025 to 07 AUG 2025

NW-1, 10 JUL 2025 to 07 AUG 2025