

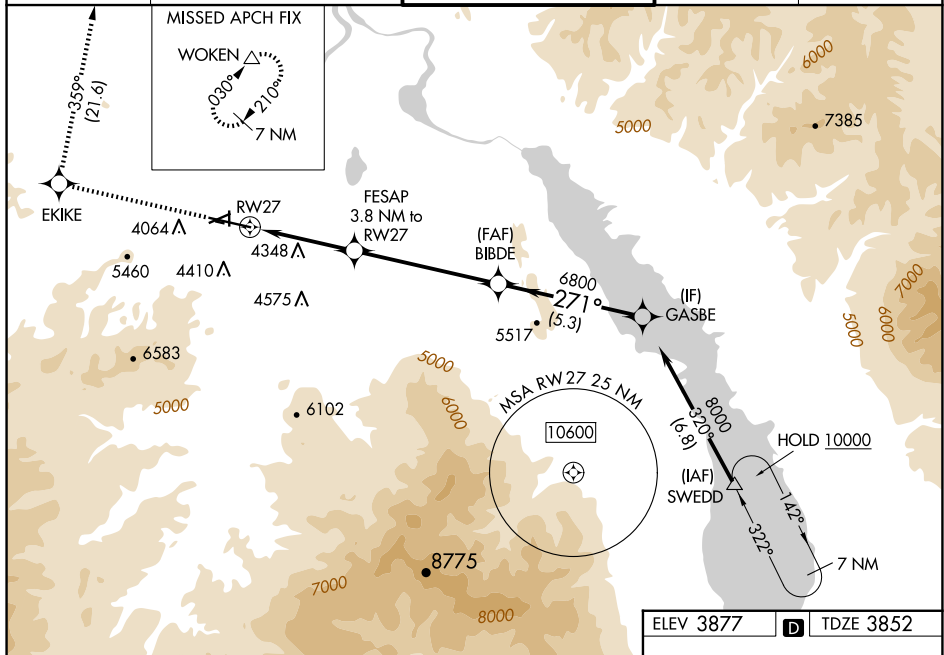


WAAS CH 69405 W27A	APP CRS 271°	Rwy Idg 9000 TDZE 3852 Apt Elev 3877
--	------------------------	---

RNAV (GPS) X RWY 27
HELENA RGNL (HLN)

<p>RNP APCH - GPS.</p> <p> Circling NA to Rwy 10 and 28. For uncompensated Baro-VNAV systems, LNAV/VNAV NA below -26°C or above 54°C. Circling Rwy 5, 23, 35 NA at night. For inop ALS, increase LPV all Cats visibility to 1% SM. Circling NA for Cat D south of Rwy 9-27.</p>	<p>MALSR</p> <p></p>	<p>MISSED APPROACH: Climb to 9400 direct EKIKE and on track 359° to WOKEN and hold.</p>
--	---	---

ATIS 120.4	HELENA APP CON ★ 119.5 229.4	HELENA TOWER ★ 118.3 (CTAF) 0 257.8	GND CON 121.9	UNICOM 122.95
----------------------	--	---	-------------------------	-------------------------



CATEGORY	A	B	C	D
LPV DA	4501-13 $\frac{1}{8}$ 649 (700-13 $\frac{1}{8}$)			
LNAV/VNAV DA	4724-2 872 (900-2)			
LNAV MDA	4880-3 $\frac{1}{4}$ 1028 (1100-3 $\frac{1}{4}$)	4880-1 1028 (1100-1)	4880-2 $\frac{1}{2}$	1028 (1100-2 $\frac{1}{2}$)
CIRCLING	4880-1 $\frac{1}{4}$ 1003 (1100-1 $\frac{1}{4}$)	4880-1 $\frac{1}{2}$ 1003 (1100-1 $\frac{1}{2}$)	6000-3	2123 (2200-3)

NW-1, 10 JUL 2025 to 07 AUG 2025

NW-1, 10 JUL 2025 to 07 AUG 2025