
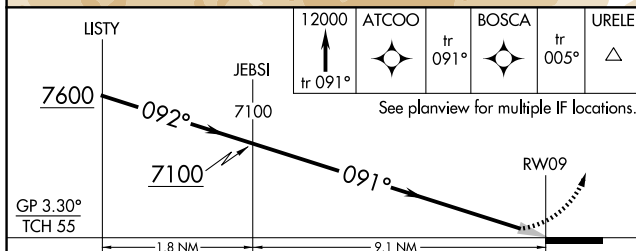
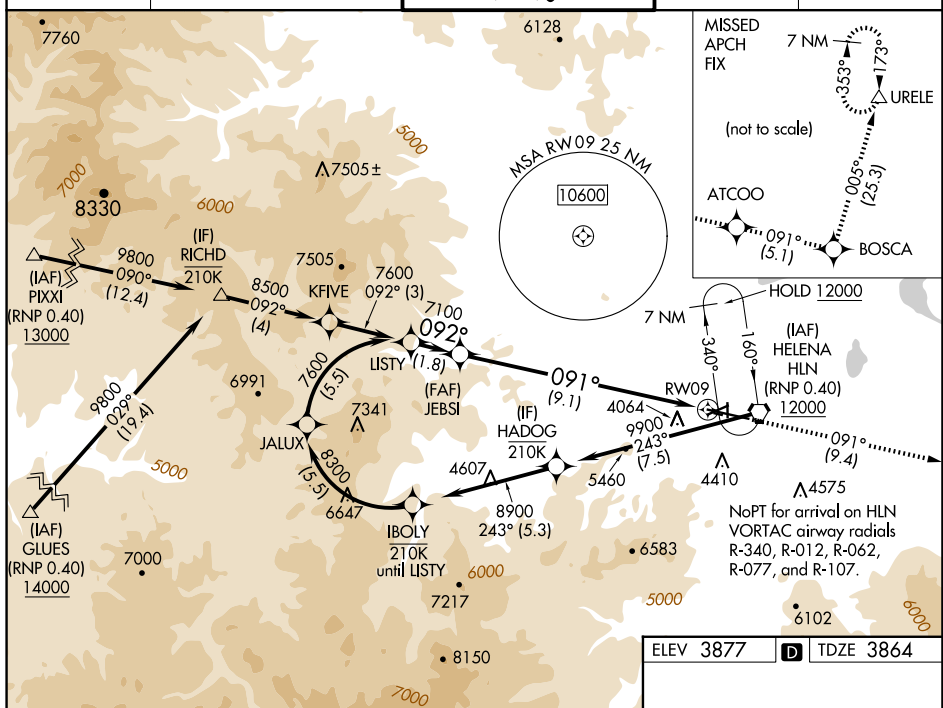


RNAV (RNP) Z RWY 9
HELENA RGNL (HLN)

MISSED APPROACH: Climb to 12000 on track 091° to ATCOO and on track 091° to BOSCA and on track 005° to URELE and hold.

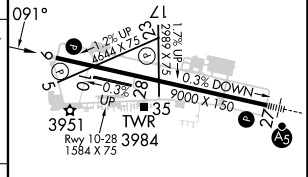
 -17°C For uncompensated Baro-VNAV systems, procedure NA below -28°C or above 54°C.

UNICOM



CATEGORY	A	B	C	D
RNP 0.11 DA		4224-1	360 (400-1)	
RNP 0.17 DA		4296-1 $\frac{1}{4}$	432 (500-1 $\frac{1}{4}$)	
RNP 0.30 DA		4489-1 $\frac{3}{4}$	625 (700-1 $\frac{3}{4}$)	

AUTHORIZATION REQUIRED



REIL Rwys 9, 17, and 35 **L**
MIRL Rwys 5-23 and 17-35 **L**
HIRL Rwy 9-27 **L**

NW-1, 10 JUL 2025 to 07 AUG 2025

NW-1. 10 JUL 2025 to 07 AUG 2025