

APP CRS 271°	Rwy Idg TDZE Apt Elev	9000 3852 3877
------------------------	-----------------------------	---

RNAV (RNP) Z RWY 27
HELENA RGNL (HLN)

RNP AR APCH - GPS.

V
A
❄-17°C

Inop table does not apply to RNP 0.30 DA. For uncompensated Baro-VNAV systems, procedure NA below -28°C or above 54°C. For inop ALS, increase RNP 0.13 DA* visibility all Cats to ½ SM, RNP 0.30 DA* visibility all Cats to 1 ½ SM.

MALSR

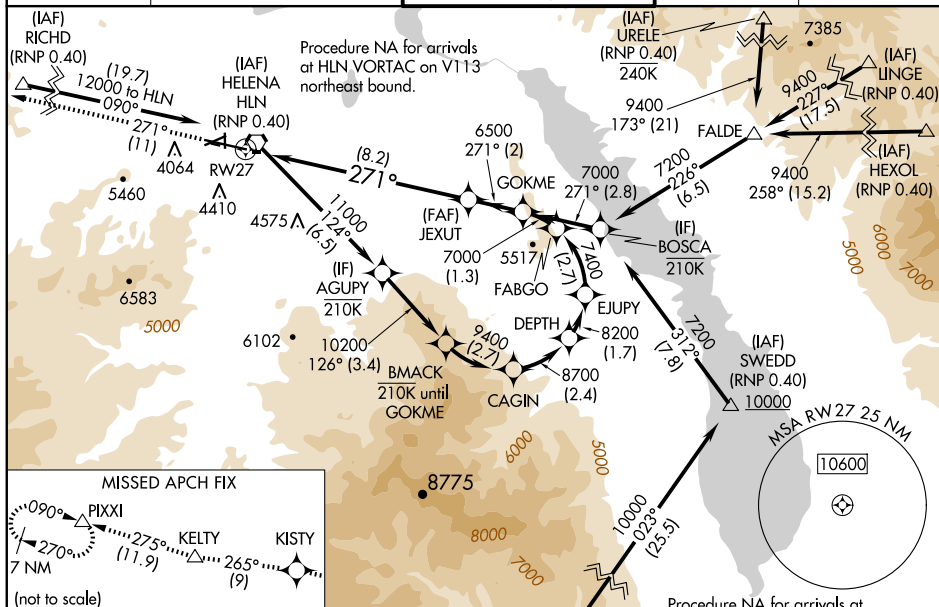


MISSED APPROACH: Climb to 12000 on the RNAV missed approach route to PIXXI and hold, continue climb-in-hold to 12000.

*Missed approach requires minimum climb of 280 feet per NM to 7800.

#Missed approach requires minimum climb of 375 feet per NM to 6300.

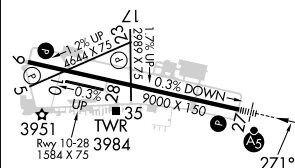
ATIS 120.4	HELENA APP CON ★ 119.5 229.4	HELENA TOWER ★ 118.3 (CTAF) 0 257.8	GND CON 121.9	UNICOM 122.95
---------------	---------------------------------	--	------------------	------------------



ELEV 3877	D	TDZE 3852
-----------	----------	-----------

	1999	2000	2001	2002
...

D	TDZE 3852
---	-----------



12000 ↑ tr 271°	KISTY ★	KELTY △	PIXI △
	tr 265°	tr 275°	

See planview for multiple IF locations.

RW27

JEXUT

GOKME

6500

271°

7000

GP 3.00°
TCH 55

CATEGORY	A	B	C	D
RNP 0.13 DA*		4172-1/2	320 (300-1/2)	
RNP 0.20 DA#		4303-7/8	451 (500-7/8)	
RNP 0.30 DA#		4353-1	501 (500-1)	
RNP 0.30 DA		4866-4	1014 (1000-4)	

AUTHORIZATION REQUIRED

HELENA, MONTANA

Amdt 2 25JAN24

46°36'N-111°59'W

HELENA RGNL (HLN)

RNAV (RNP) Z RWY 27