

APP CRS
271°

Rwy Idg
TDZE
3877

Rwy Elev
3877

RNAV (RNP) Y RWY 27

HELENA RGNL (HLN)

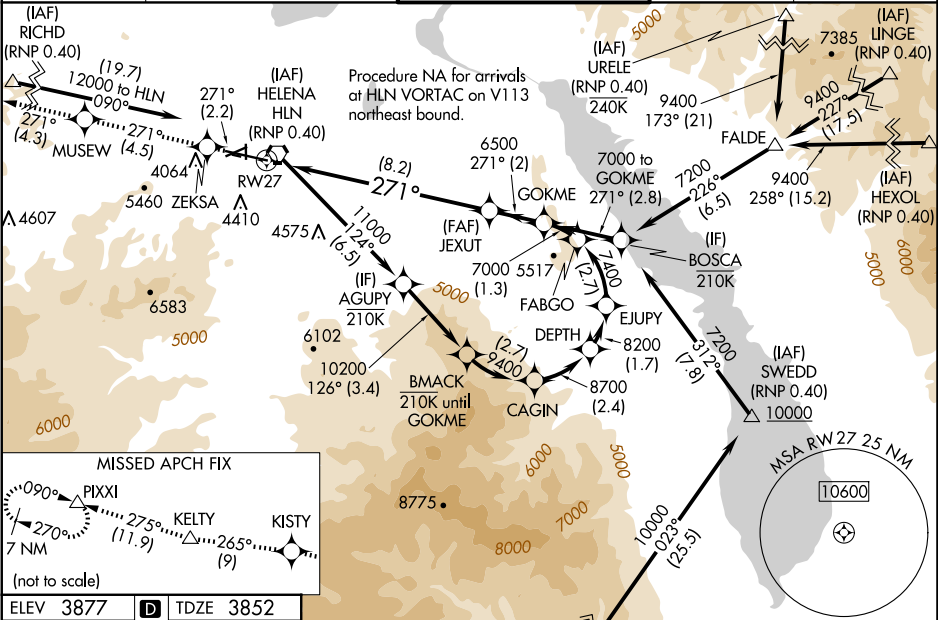
RNP AR APCH - GPS.

For uncompensated Baro-VNAV systems,
procedure NA below -28°C or above 54°C.
Missed approach requires RNP less than 1.0.
For inop ALS, increase RNP 0.30 DA* visibility
all Cnts to 1 1/2 SM.

MALSR

MISSED APPROACH: Climb to 12000 on the RNAV missed approach route to PIXXI and hold, continue climb-in-hold to 12000.
*Missed approach requires minimum climb of 260 feet per NM to 7900; if unable to meet climb gradient, see RNAV (RNP) Z RWY 27.

ATIS 120.4	HELENA APP CON * 119.5 229.4	HELENA TOWER * 118.3 (CTAF) 257.8	GND CON 121.9	UNICOM 122.95
---------------	---------------------------------	--------------------------------------	------------------	------------------



ELEV 3877

TDZE 3852

REIL Rwy 9, 17, and 35

MIRL Rwy 5-23 and 17-35

HIRL Rwy 9-27

12000	ZEKSA	MUSEW	KISTY	KELTY	PIXXI	GOKME
tr 271°	tr 271°	tr 271°	tr 265°	tr 275°	tr 275°	
See planview for multiple IF locations.						
RW27						
JEXUT						
6500						
7000						
GP 3.00°						
TCH 55						
8.2 NM						
2 NM						
CATEGORY	A	B	C	D		
RNP 0.15 DA*	4284-3/4		432 (500-3/4)			
RNP 0.30 DA*	4321-1		469 (500-1)			

AUTHORIZATION REQUIRED