


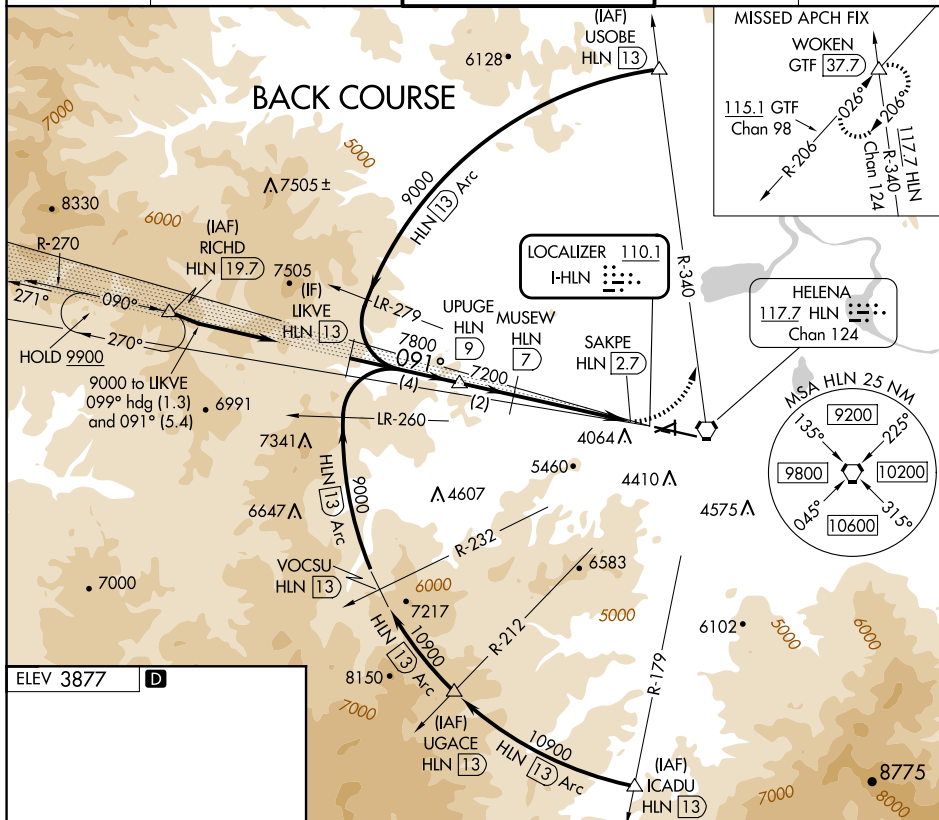


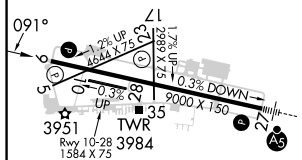
LOC BC-C
HELENA RGNL (HLN)

 Circling NA to Rwy 10 and 28. Circling Rwy 5, 23, 35 NA at night.
 DME from HLN VORTAC. Simultaneous reception of I-HLN and HLN DME
 -17°C required. Rwy 5, 23, 35 helicopter visibility reduction below 1 SM NA.

MISSED APPROACH: Climbing left turn to 9400 on HLN VORTAC R-340 to WOKEN INT/GTF 37.7 DME and hold, continue climb-in-hold to 9400.

UNICOM
122.95

D



REIL Rlys 9, 17, and 35 **L**
MIRL Rlys 5-23 and 17-35 **L**
HIRL Rwy 9-27 **L**

