




VORTAC HLN <b><u>117.7</u></b> Chan <b>124</b>	APP CRS <b>258°</b>	Rwy Idg <b>N/A</b> Surface Elev <b>3846</b> Apt Elev <b>3877</b>
--	------------------------	--

COPTER VOR 258°  
HELENA RGNL (HLN)


 NA When local altimeter setting not received, procedure NA.  
 -17°C

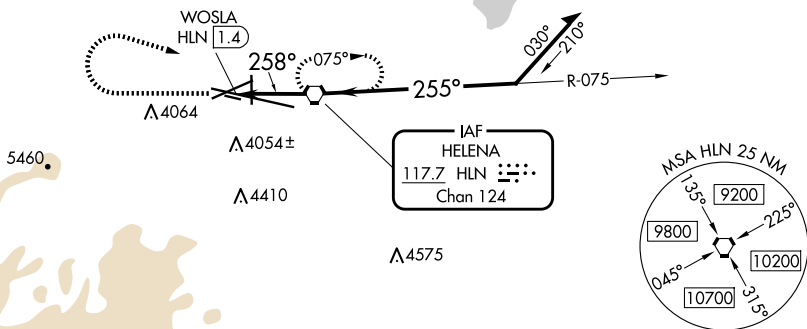
**MISSED APPROACH:** Climb to 4700 then climbing right turn to 8000 direct HLN VORTAC and hold, continue climb-in-hold to 8000.




ATIS <b>120.4</b>	HELENA APP CON ★ <b>119.5 229.4</b>	HELENA TOWER ★ <b>118.3 (CTAF) 0 257.8</b>	GND CON <b>121.9</b>	UNICOM <b>122.95</b>
----------------------	--	---	-------------------------	-------------------------

Limit final and missed approach to 70K.  
Increase to 90K upon reaching the holding fix.

Designated landing area at WOSLA;  
intersection of Rwy 9-27 and Taxiway G.

760 foot descent gradient may be required for PT outbound.



4700	8000	HLN
		

HLN  
VORTAC

10500

75°

Remain within 5 NM

6700

258°

4800

255°

CATEGORY	COPTER
H-258	4320-1 474 (500-1)

