

WAAS CH <b>78013</b> <b>W31A</b>	APP CRS <b>308°</b>	Rwy Idg <b>8129</b> TDZE <b>308</b> Apt Elev <b>310</b>
--	------------------------	---

RNAV (GPS) RWY 31  
HARRISBURG INTL (MDT)

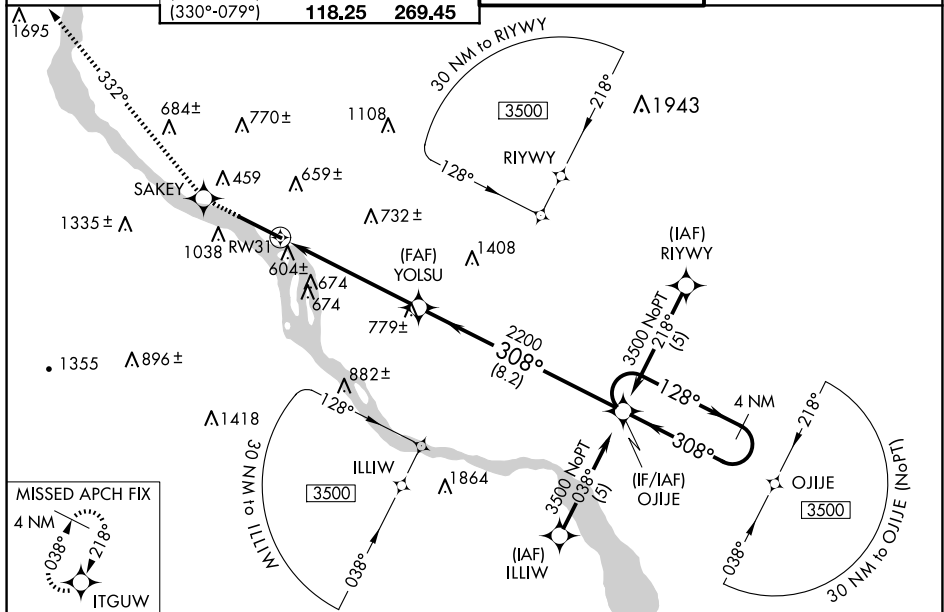
RNP APCH - GPS.

**T** Circling NA south of Rwy 13-31. For uncompensated Baro-VNAV  
**A** systems, LNAV/VNAV NA below -15°C or above 48°C.

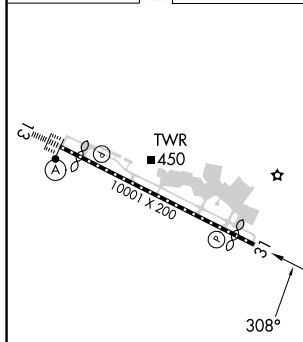
 -17°C

**MISSED APPROACH:** Climb to 3500 direct SAKEY and on track 332° to ITGUW and hold.

ATIS <b>118.8</b>	HARRISBURG APP CON			HARRISBURG INTL TOWER		GND CON	
	(080°-179°)	<b>126.45</b>	<b>281.525</b>	<b>124.8</b>	<b>269.35</b>	<b>121.7</b>	<b>348.6</b>
	(180°-329°)	<b>124.1</b>	<b>273.525</b>				
	(330°-079°)	<b>118.25</b>	<b>269.45</b>				



ELEV	310	<b>D</b>	TDZE	308
------	-----	----------	------	-----



TDZ/CL Rwy 13  
REIL Rwy 31  
HIRL Rwy 13-31

3500 ↑	SAKEY ✦	fr 332° ✦	ITGUW ✦	VGSI and RNAV glidepath not coincident (VGSI Angle 3.00/TCH 51).			
				4 NM Holding Pattern OJJE 128° → 3500 ← 308° GP 3.00° TCH 51			
CATEGORY	A		B		C		D
LPV DA			558/50		250 (300-1)		
RNAV/ VNAV DA			921-2¼		613 (700-2¼)		
RNAV MDA	1100/55 792 (800-1)	1100/60 792 (800-1¼)	1100-2¼ 792 (800-2¼)	1100-2½ 792 (800-2½)			
CIRCLING	1100-1 790 (800-1)	1100-1¼ 790 (800-1¼)	1100-2¼ 790 (800-2¼)	1440-3 1130 (1200-3)			

## RNAV (GPS) RWY 31