
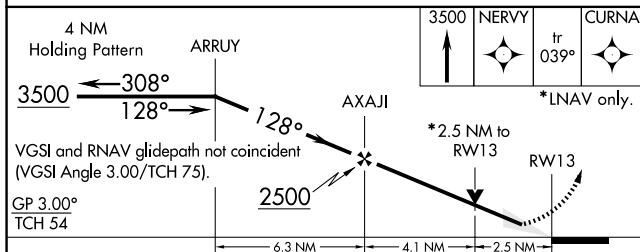
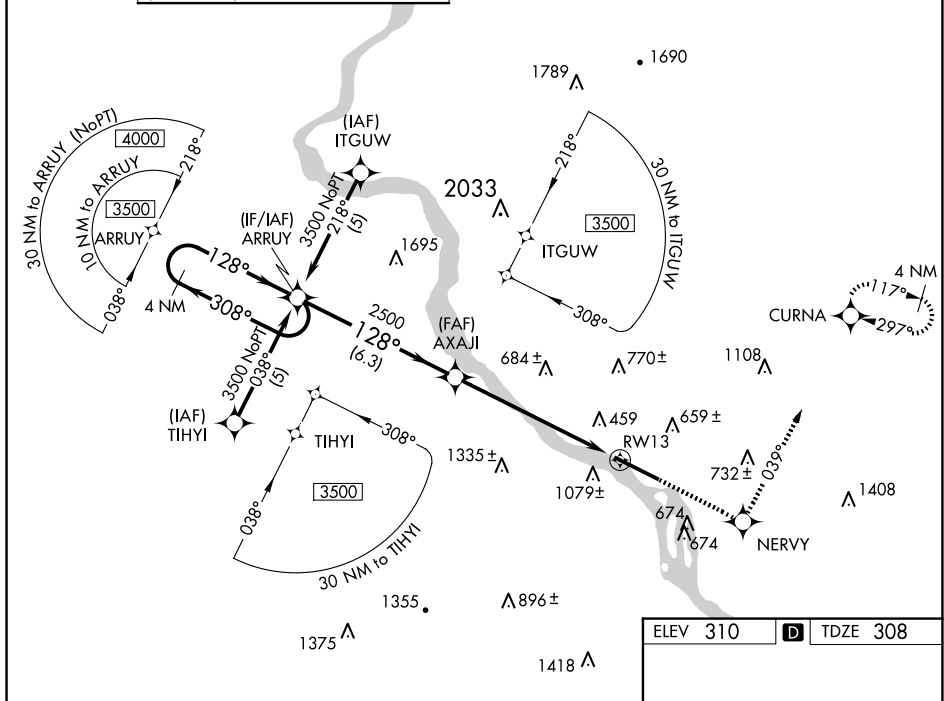


WAAS CH <b>86313</b> <b>W13A</b>	APP CRS <b>128°</b>	Rwy Idg <b>8070</b> TDZE <b>308</b> Apt Elev <b>310</b>
--	------------------------	---

# RNAV (GPS) RWY 13

   -17°C	Circling NA south of Rwy 13-31. For uncompensated Baro-VNAV systems, LNAV/VNAV NA below -15°C (5°F) or above 48°C (118°F). DME/DME RNP 0.3 NA. Inop table does not apply to LNAV/VNAV all Cats.	ALSF-2 	MISSED APPROACH: Climb to 3500 direct NERRY and via track 039° to CURN and hold, continue climb-in-hold to 3500.
---	---	---	--

ATIS 118.8	HARRISBURG APP CON			HARRISBURG INTL TOWER	GND CON	
	(080°-179°)	126.45	281.525		124.8	269.35
	(180°-329°)	124.1	273.525			
	(330°-079°)	118.25	269.45			



CATEGORY		A	B	C	D
LPV	DA	558/24		250 (300-½)	
LNAV/ VNAV	DA	1572-5		1264 (1300-5)	
LNAV	MDA	1180/24 872 (900-½)	1180/40 872 (900-¾)	1180-2 872 (900-2)	1180-2¼ 872 (900-2¼)
CIRCLING		1180-1 870 (900-1)	1180-1¼ 870 (900-1¼)	1180-2½ 870 (900-2½)	1440-3 1130 (1200-3)

