

LOC I-MDT 110.9	APP CRS 128°	Rwy Idg 8070 TDZE 308 Apt Elev 310
---------------------------	------------------------	--

ILS or LOC RWY 13
HARRISBURG INTL (MDT)

⚠ Circling NA south of Rwy 13-31.

⚠ -17°C

ALSF-2

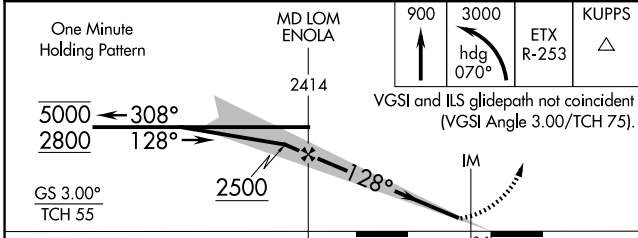
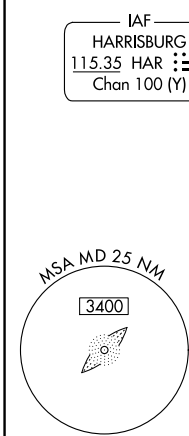
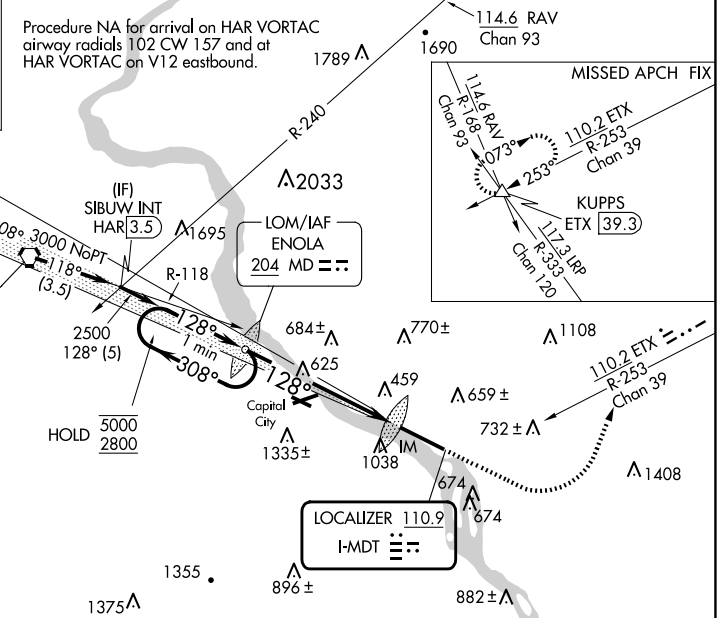
MISSED APPROACH: Climb to 900 then climbing left turn to 3000 on heading 070° and on ETX VOR/DME R-253 to KUPPS INT/ETX 39.3 DME and hold.

ATIS 118.8	HARRISBURG APP CON (080°-179°) 126.45 281.525 (180°-329°) 124.1 273.525 (330°-079°) 118.25 269.45	HARRISBURG INTL TOWER 124.8 269.35	GND CON 121.7 348.6
----------------------	---	--	-------------------------------

ALTERNATE MISSED APCH FIX

HARRISBURG HAR **115.35**
Chan 100 (Y)

R-281 101° 281°



ELEV 310	TDZE 308
----------	----------

TDZ/CL Rwy 13
REIL Rwy 31
HIRL Rwy 13-31

FAF to MAP 6.4 NM

Knots	60	90	120	150	180
Min:Sec	6:24	4:16	3:12	2:34	2:08

CATEGORY	A	B	C	D
S-ILS 13		508/18	200 (200-½)	
S-LOC 13	900/24	592 (600-½)	900-1¼	592 (600-1¼)
CIRCLING	900-1 590 (600-1)	980-1 670 (700-1)	1000-2 690 (700-2)	1420-3 1110 (1200-3)

NE-4, 10 JUL 2025 to 07 AUG 2025

NE-4, 10 JUL 2025 to 07 AUG 2025