

WAAS CH <b>62830</b> <b>W14A</b>	APP CRS <b>137°</b>	Rwy Idg TDZE Apt Elev	<b>6236</b> <b>2608</b> <b>2613</b>
--	------------------------	-----------------------------	---

RNAV (GPS) RWY 14  
PECOS MUNI (PEQ)

RNP APCH - GPS.

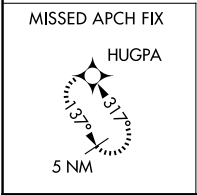
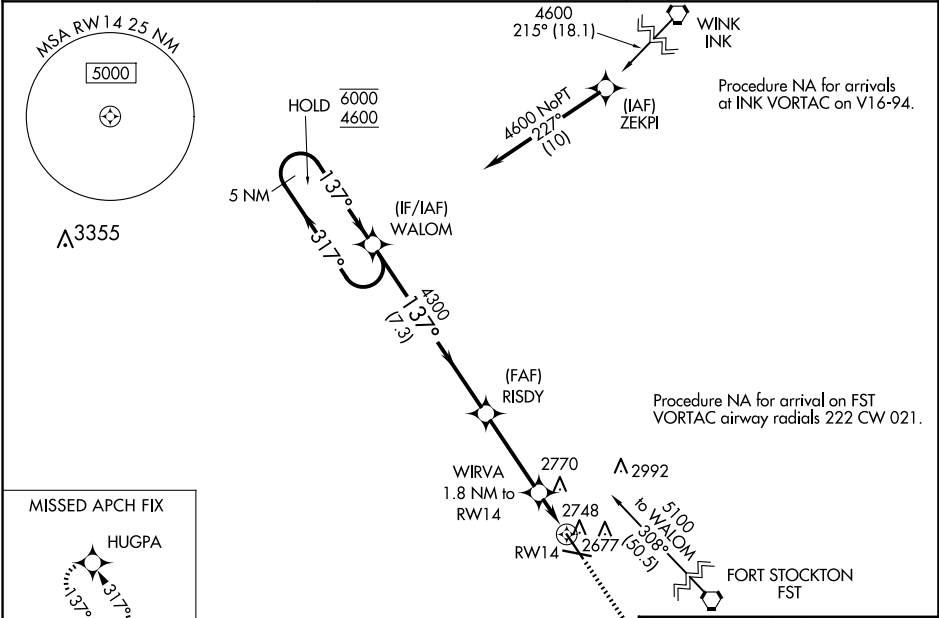
▼

▲

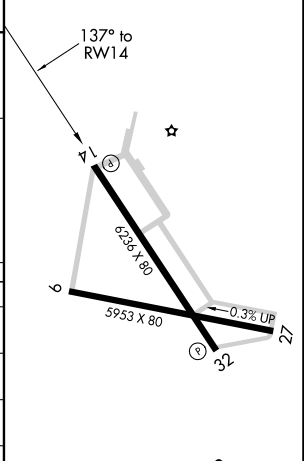
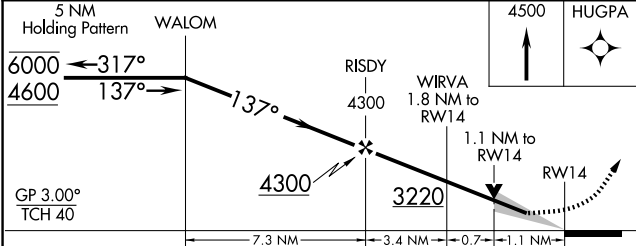
Circling Rwy 9, 27 NA at night. Baro-VNAV and VDP NA when using Wink altimeter setting. For uncompensated Baro-VNAV systems, LNAV/VNAV NA below -20°C or above 54°C. When local altimeter setting not received, use Wink altimeter setting and increase LPV DA to 2903 feet and all visibilities ½ SM. Increase LNAV/VNAV DA to 3004 feet and all visibilities ¼ SM. Increase all MDAs 100 feet and LNAV visibility Cat C/D ¼ SM, and Circling visibility Cat C/D ¼ SM.

MISSED APPROACH:  
Climb to 4500 direct HUGPA and hold.

AWOS-3 <b>118.175</b>	ALBUQUERQUE CENTER <b>135.875 292.15</b>	UNICOM <b>122.8 (CTAF) 0</b>
--------------------------	---	---------------------------------



ELEV 2613	TDZE 2608
-----------	-----------



CATEGORY	A	B	C	D
LPV DA		2808-¾ 200 (200-¾)		
LNAV/VNAV DA		2909-7/8 301 (300-7/8)		
LNAV MDA	3000-1	392 (400-1)	3000-1½ 392 (400-1½)	
CIRCLING	3060-1 447 (500-1)	3140-1 527 (600-1)	3360-2¼ 747 (800-2¼)	3360-2½ 747 (800-2½)

MIRL Rwy 9-27 and 14-32 0

SC-3, 10 JUL 2025 to 07 AUG 2025

SC-3, 10 JUL 2025 to 07 AUG 2025