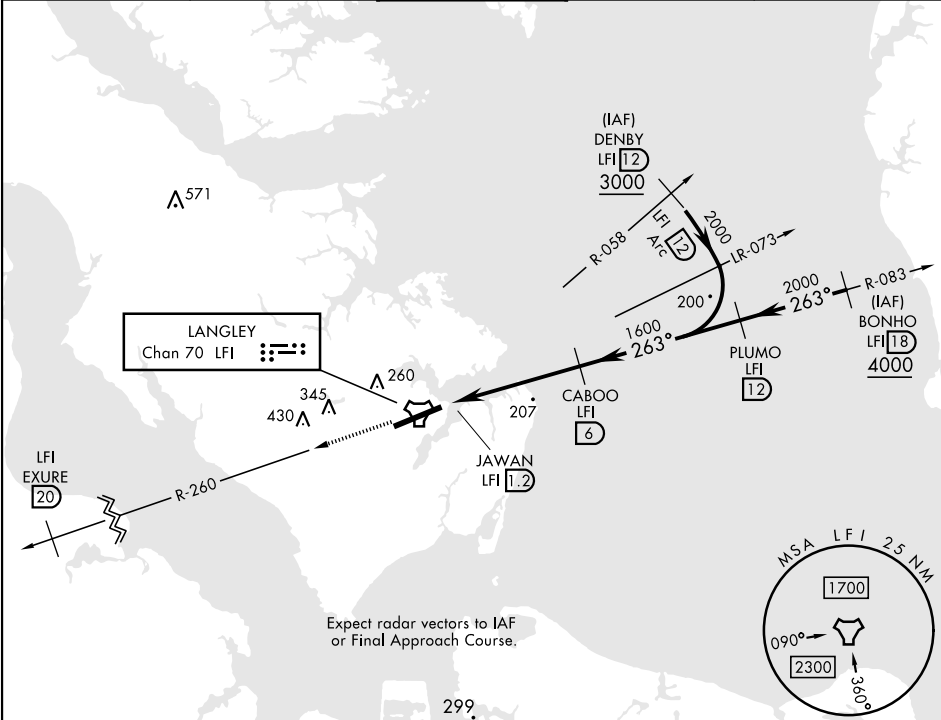


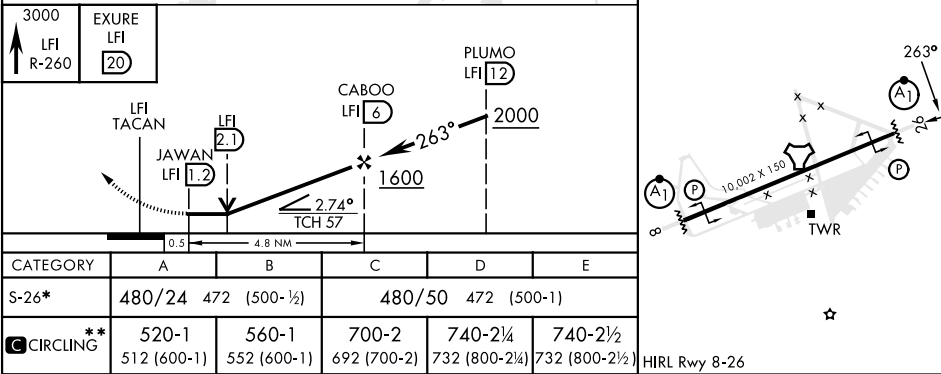
TACAN Y RWY 26

TACAN LFI Chan 70	APCH CRS 263°	Rwy ldg 10,002 TDZE 8 Arprt Elev 8	[USAF]	LANGLEY AFB (KLFI)
* When ALS inop, increase CAT AB RVR to 55 and vis to 1 mile, CAT CDE vis to 1½ miles. ** Circling not authorized S of Rwy 8-26.			ALSF-1 A1	MISSED APPROACH: Climb to 3000 on LFI TACAN R-260 to EXCURE LFI 20 DME, then as instructed by ATC.

ATIS ★ 270.1	NORFOLK APP CON 125.7 335.625	TOWER ★ 125.0 253.5	GND CON 121.7 275.8	CLNC DEL 118.85 257.625
-----------------	----------------------------------	------------------------	------------------------	----------------------------



EMERG SAFE ALT 100 NM 4100



TACAN Y RWY 26

NE-3, 10 JUL 2025 to 07 AUG 2025

NE-3, 10 JUL 2025 to 07 AUG 2025