

TACAN LFI Chan 70	APCH CRS 073°	Rwy Idg 10,002 TDZE 8 Arpt Elev 8	[USAF]	LANGLEY AFB (KLFJ)
-------------------	---------------	---	--------	--------------------

# HI-TACAN Z RWY 8

▼

\* When ALS inop, increase CAT CDE vis to 1 3⁄8 miles.

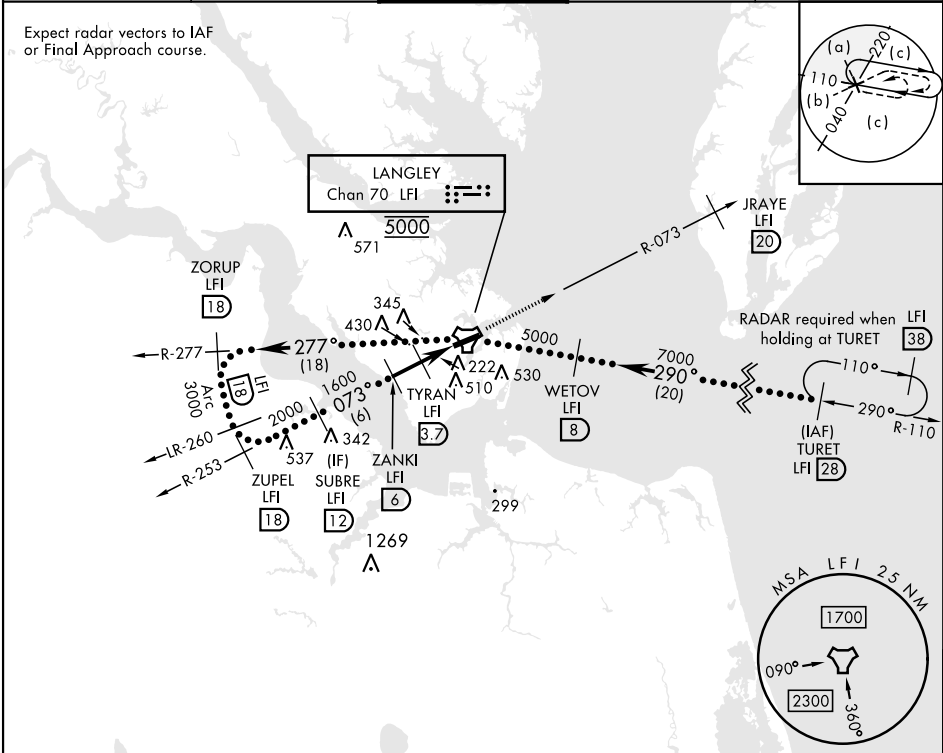
\*\* Circling S of Rwy 8-26 not authorized.

ALSF-1

A1

MISSED APPROACH: Climb to 3000 via LFI TACAN R-073 to JRAYE/20 DME, then as instructed by ATC.

ATIS ★ 270.1	NORFOLK APP CON 125.7 335.625	TOWER ★ 125.0 253.5	GND CON 121.7 275.8	CLNC DEL 118.85 257.625
--------------	-------------------------------	---------------------	---------------------	-------------------------



EMERG SAFE ALT 100 NM 4100

ELEV	8	TDZE	8
------	---	------	---

SUBRE LFI 12

2000

073°

1600

ZANKI LFI 6

2.87°

TCH 54

900

TYRAN LFI 3.7

LFI 2.3

FUNDY LFI 1.4

LFI TACAN

2.3 NM

2.3 NM

0.5

3000

LFI R-073

JRAYE LFI 20

CATEGORY	C	D	E
S-8 *	480/50	472 (500-1)	
CIRCLING **	700-2 692 (700-2)	740-2 1⁄4 732 (800-2 1⁄4)	740-2 1⁄2 732 (800-2 1⁄2)

HIRL Rwy 8-26

Amdt 7 17APR25

HI-TACAN Z RWY 8