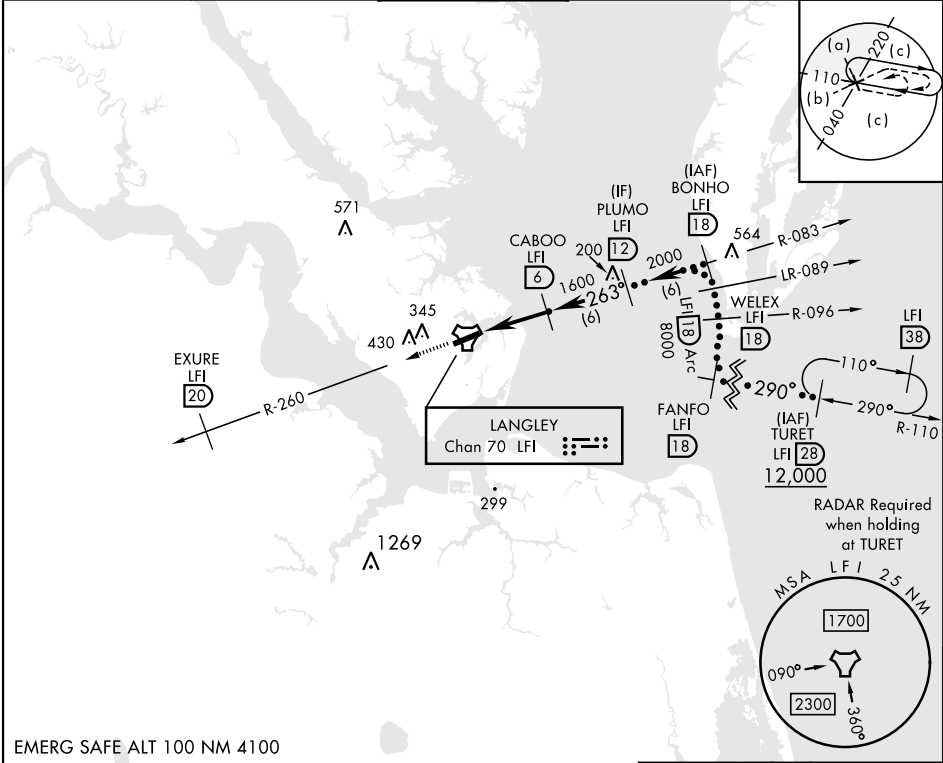
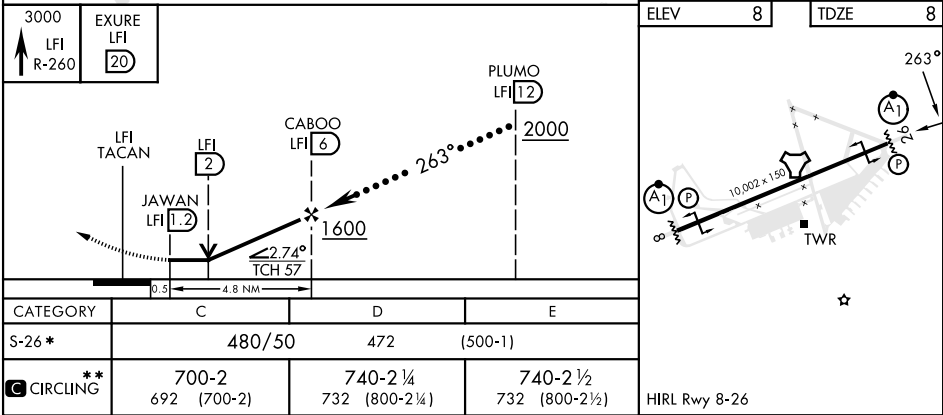


HI-TACAN Z RWY 26

TACAN LFI Chan 70	APCH CRS 263°	Rwy Ldg TDZE 8 Arpt Elev 8	[USAF]	LANGLEY AFB (KLFJ)
* When ALS inop, increase CAT CDE vis to 1½ miles. ** Circling S of Rwy 8-26 not authorized.			ALSF-1	MISSED APPROACH: Climb to 3000 via LFI TACAN R-260 to EXURE LFI 20 DME, then as instructed by ATC.
ATIS ★ 270.1	NORFOLK APP CON 125.7 335.625	TOWER ★ 125.0 253.5	GND CON 121.7 275.8	CLNC DEL 118.85 257.625



EMERG SAFE ALT 100 NM 4100



HI-TACAN Z RWY 26